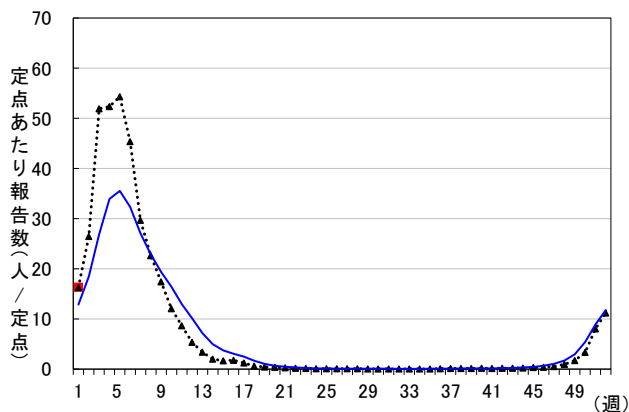


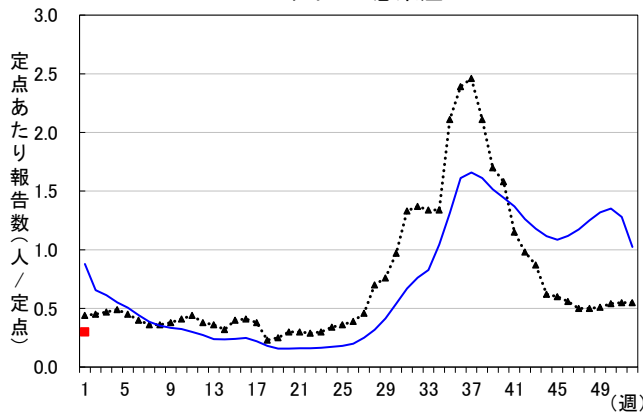
週別報告数(全国) 2019年 第1週現在

— 2019年 ····· 2018年 — 過去5年間の平均
 *過去5年間の平均: 前週、当該週、後週の合計15週の平均

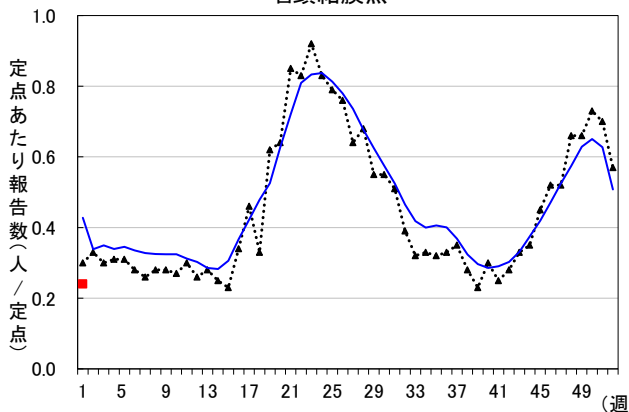
インフルエンザ



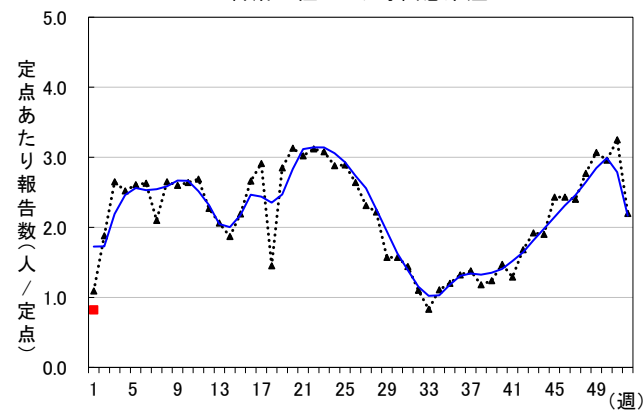
RSウイルス感染症



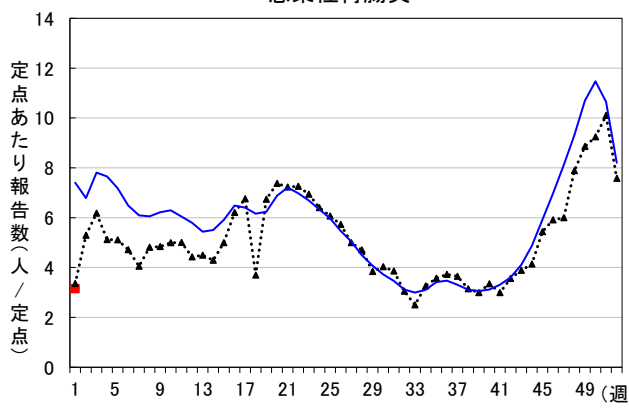
咽頭結膜熱



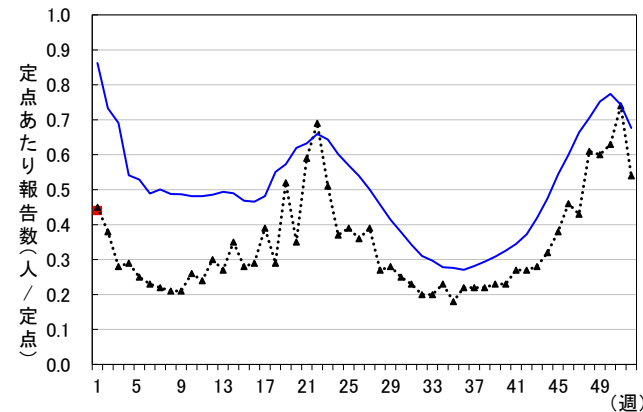
A群溶血性レンサ球菌感染症



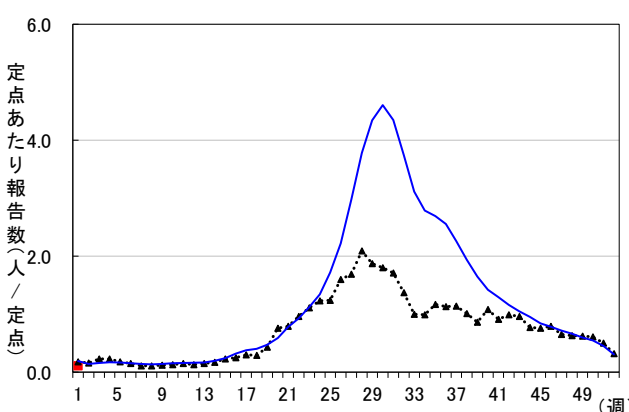
感染性胃腸炎



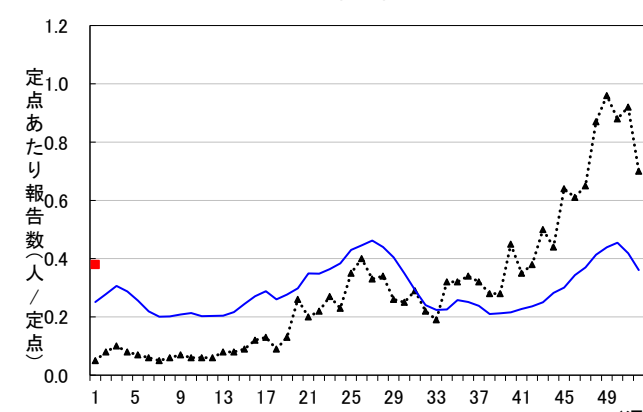
水痘



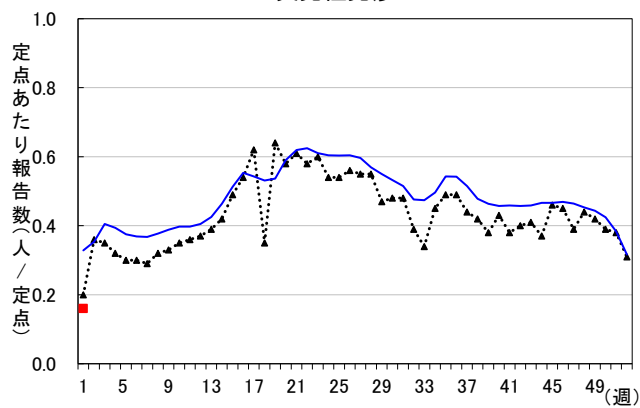
手足口病



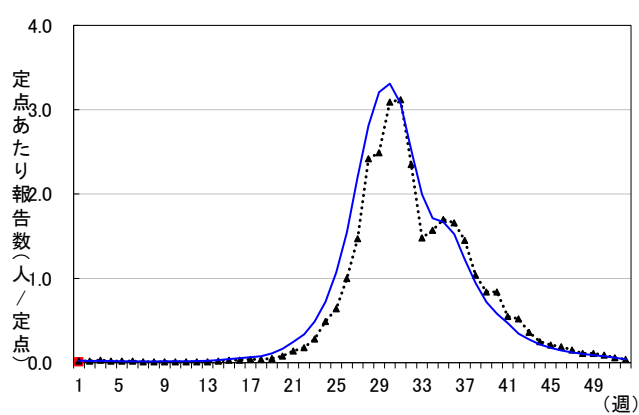
伝染性紅斑



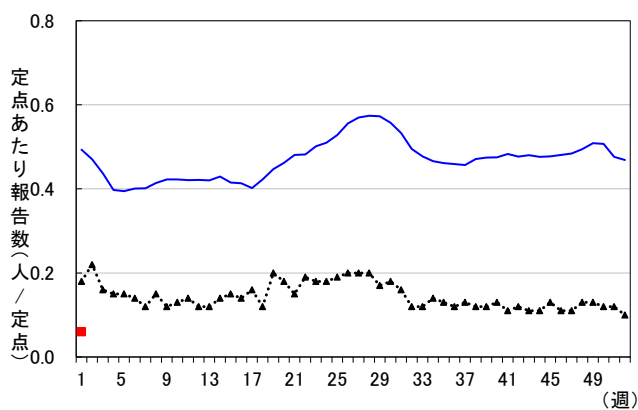
突発性発疹



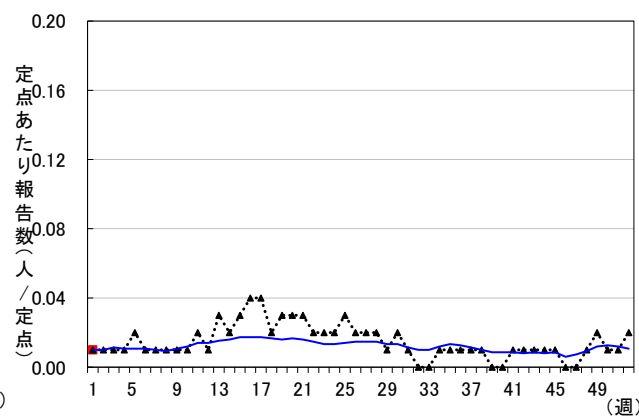
ヘルパンギーナ



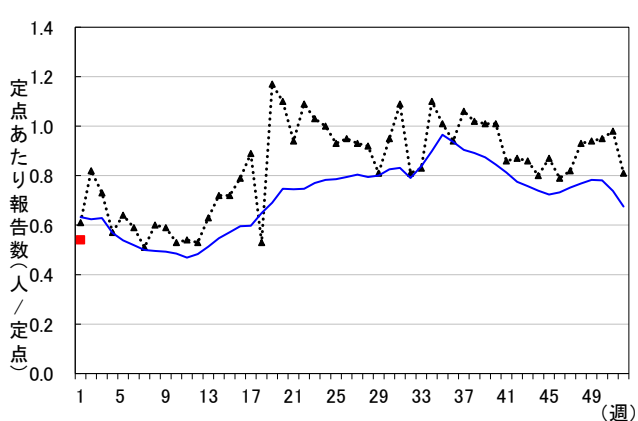
流行性耳下腺炎



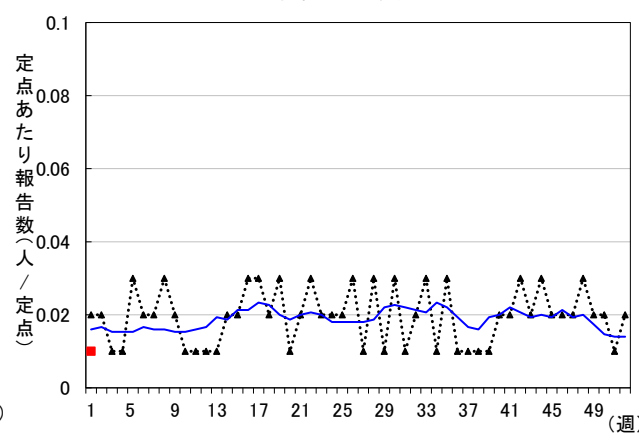
急性出血性結膜炎



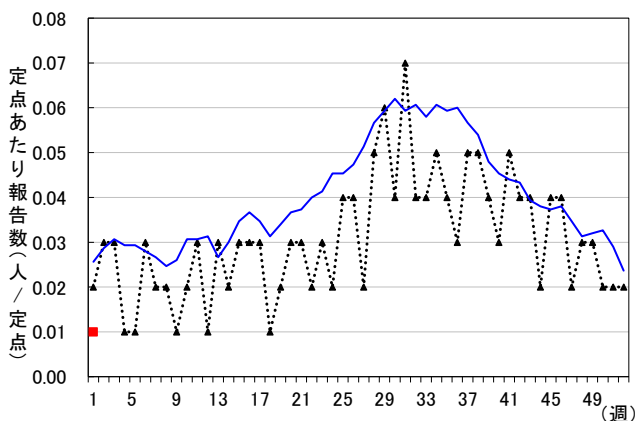
流行性角結膜炎



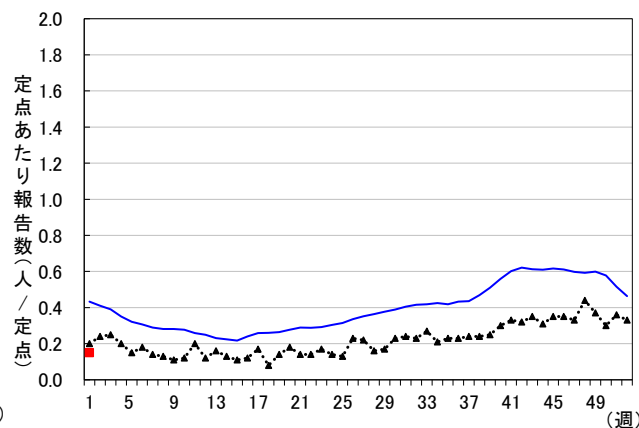
細菌性髄膜炎



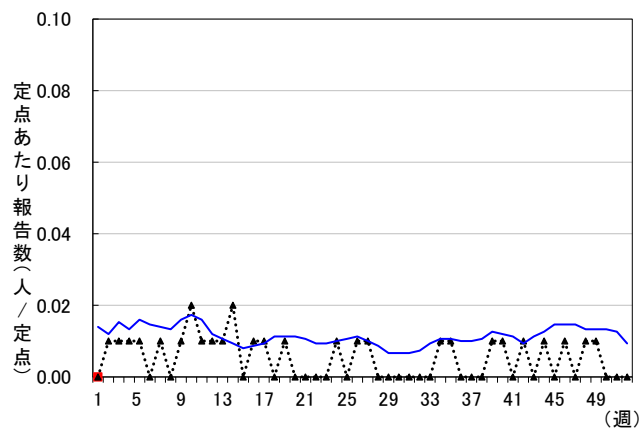
無菌性髄膜炎



マイコプラズマ肺炎



クラミジア肺炎



感染性胃腸炎(ロタウイルス)

