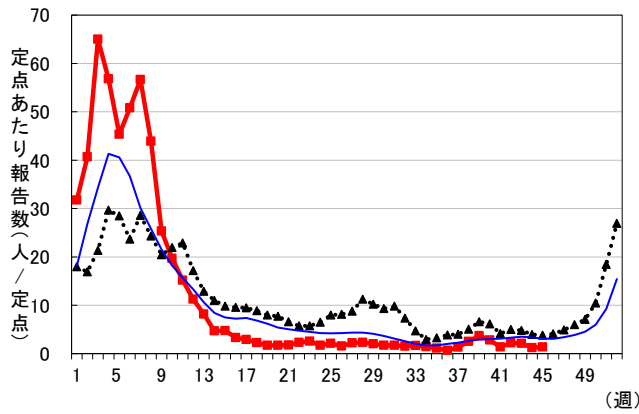


週別報告数(県内) 2018年 第45週現在

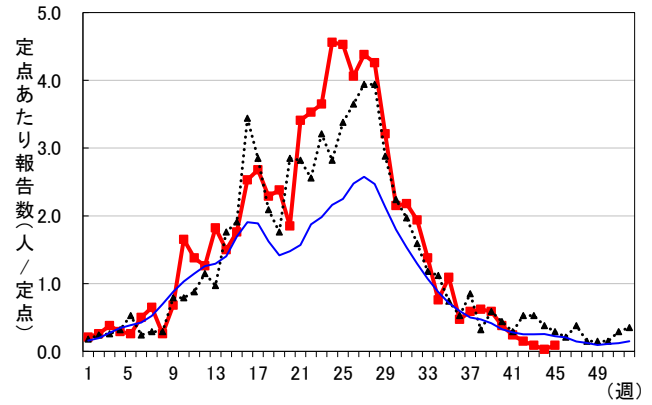
— 2018年 ····· 2017年 — 過去5年間の平均

*過去5年間の平均:前週、当該週、後週の合計15週の平均

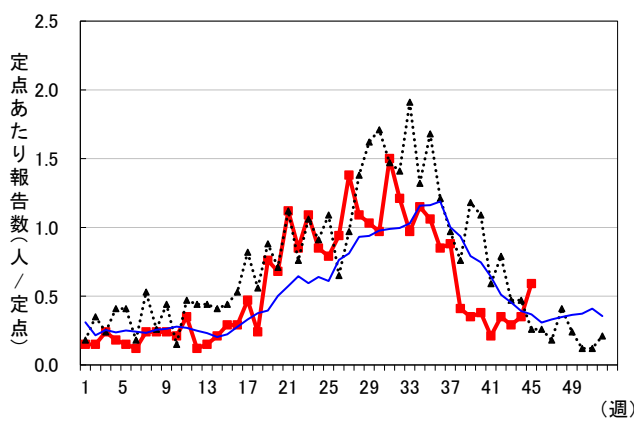
インフルエンザ



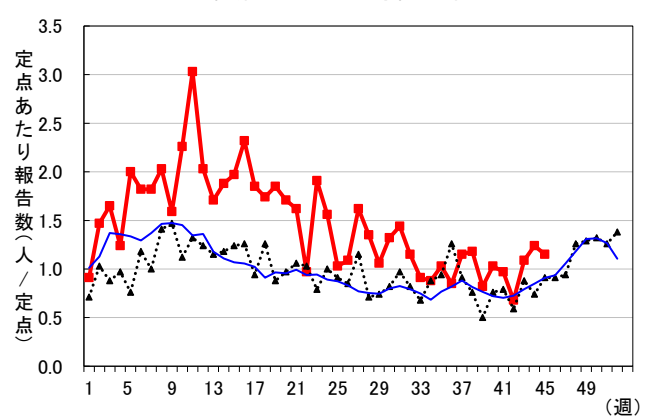
RSウイルス感染症



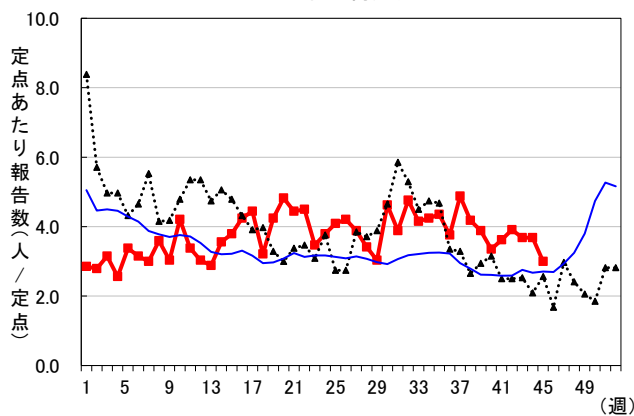
咽頭結膜熱



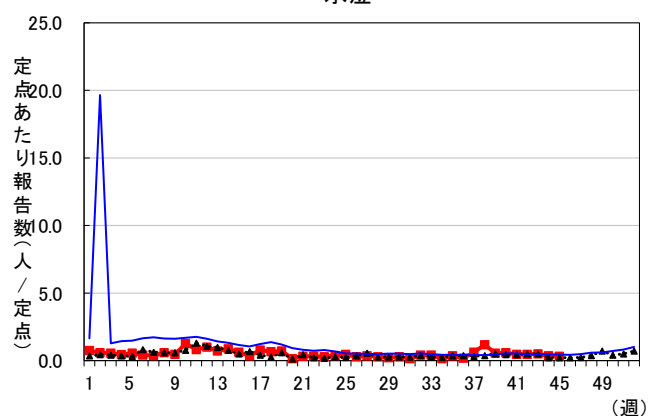
A群溶血性レンサ球菌感染症



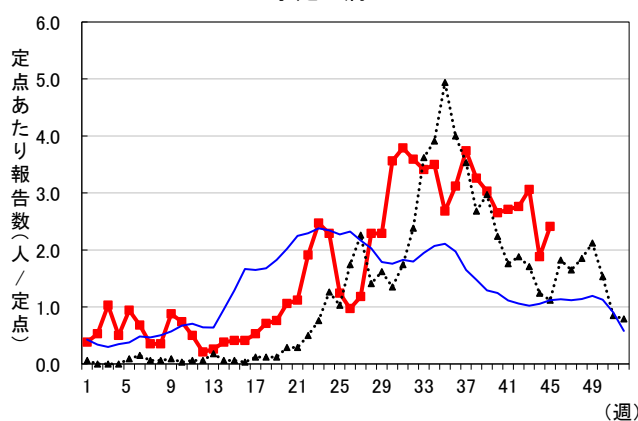
感染性胃腸炎



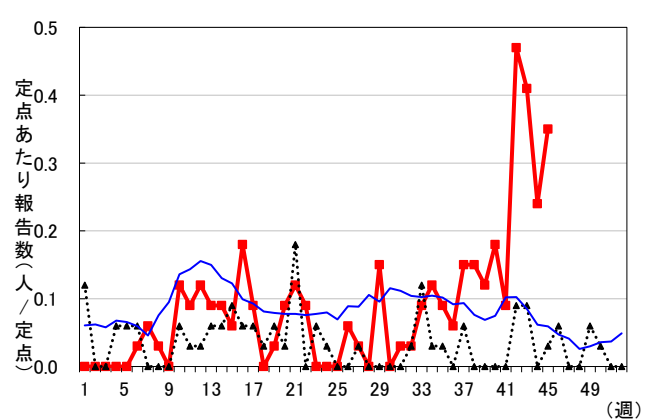
水痘

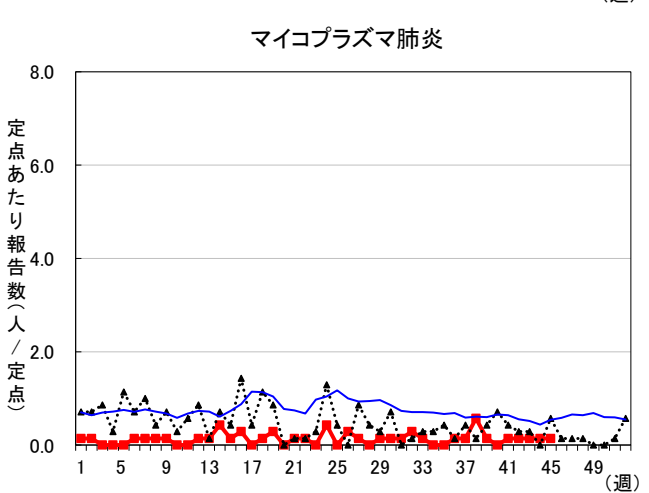
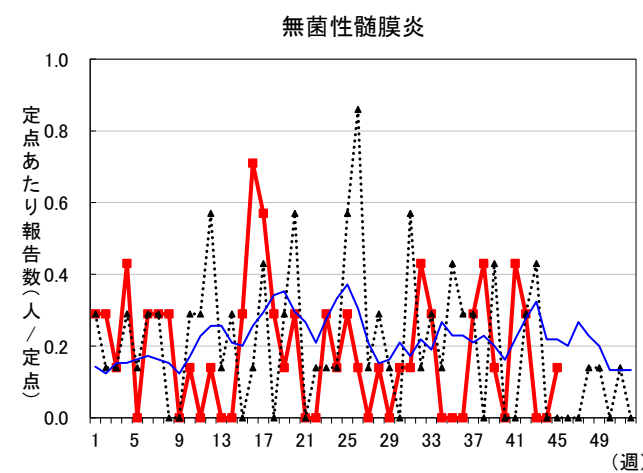
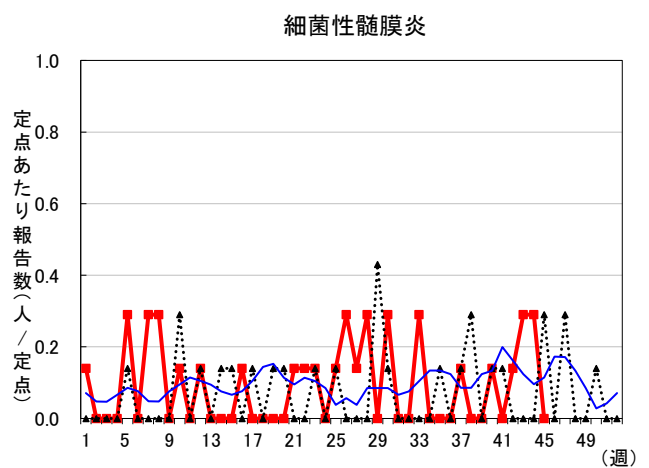
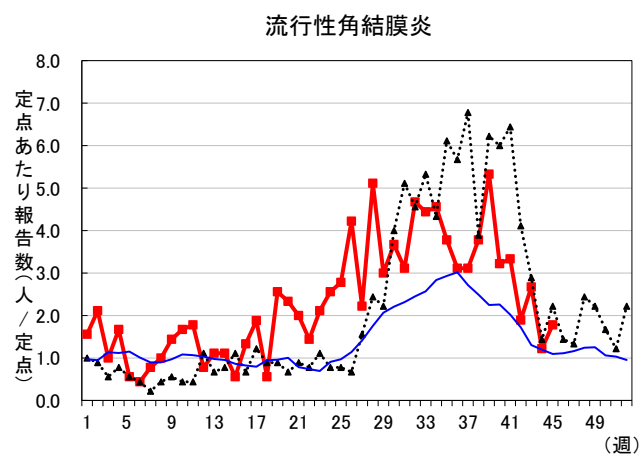
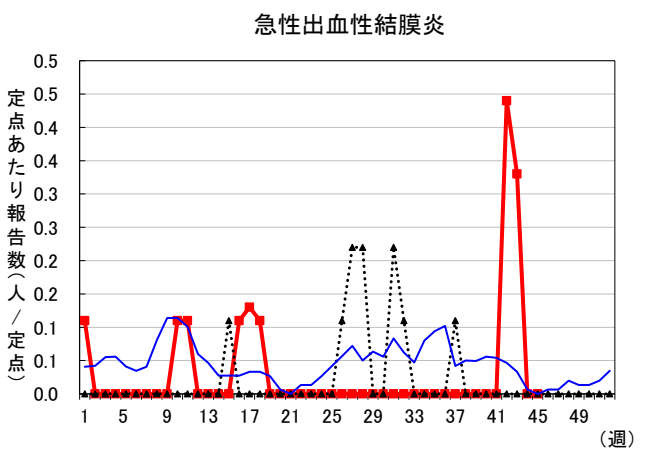
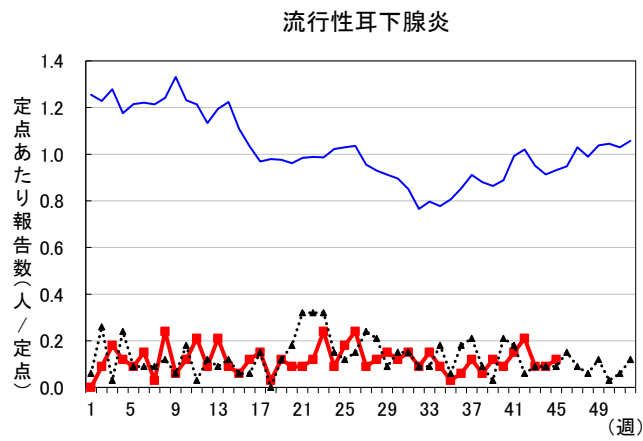
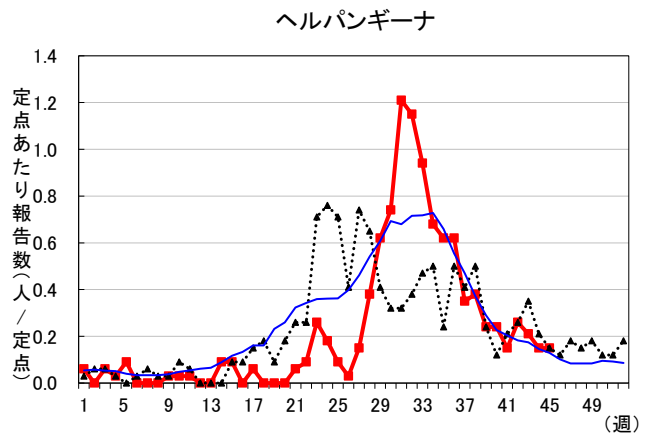
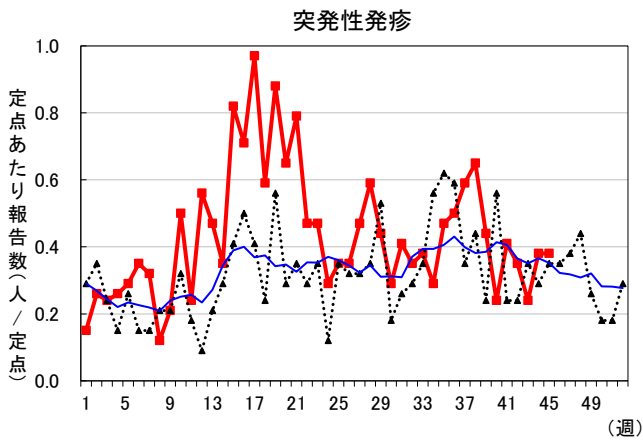


手足口病

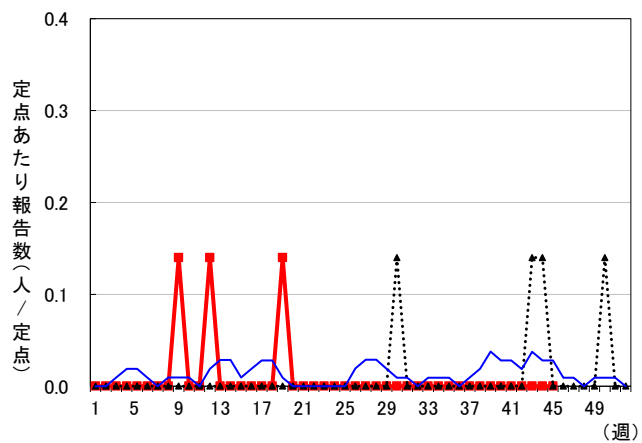


伝染性紅斑





クラミジア肺炎



感染性胃腸炎(ロタウイルス) ※過去4年間の平均

