

1

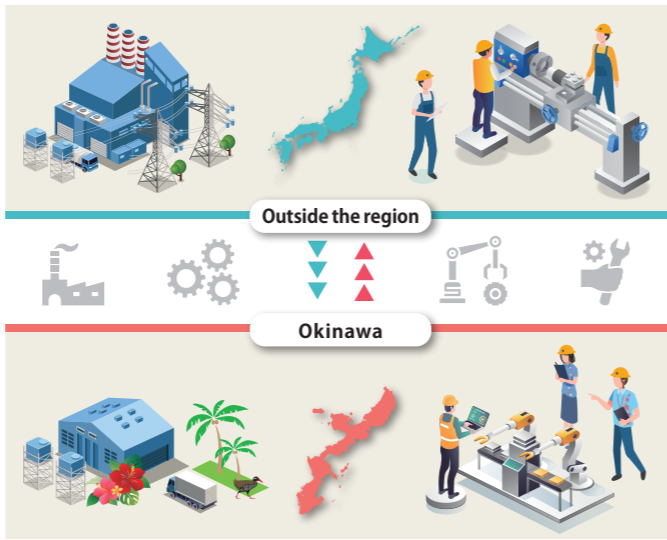
Geographic Features of Okinawa

In recent years, business continuity planning (BCP) and disaster recovery measures have become indispensable in preparation for such unforeseen emergencies as earthquakes, tsunamis, heavy rainfall, and other natural disasters or accidents; therefore, Okinawa's business resilience—its adaptability and recoverability in times of crisis— have drawn attention because of the region's unique geographic characteristics.



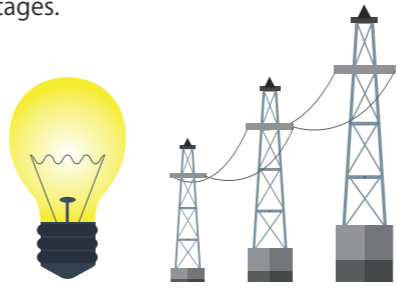
Point 1 Distant From the Mainland, There Is a Low Risk of Simultaneous Disaster Occurrence

Due to its remote location, far from the mainland, Okinawa is considered to have a relatively low risk of simultaneous disaster occurrence in the event of a large-scale disaster on the mainland. Some companies have actually moved their bases of operations to Okinawa, or placed a base for data backup and BCP measures here, after large scale disasters. The government also sees Okinawa as a valuable base for risk diversification, with some government offices adopting Okinawa as the place for their data backup centers. Okinawa's proximity to the mainland also has the advantage of speeding up disaster recovery. Okinawa is an ideal location for disaster countermeasure system backups and dual centers (operation centers that operate simultaneously).



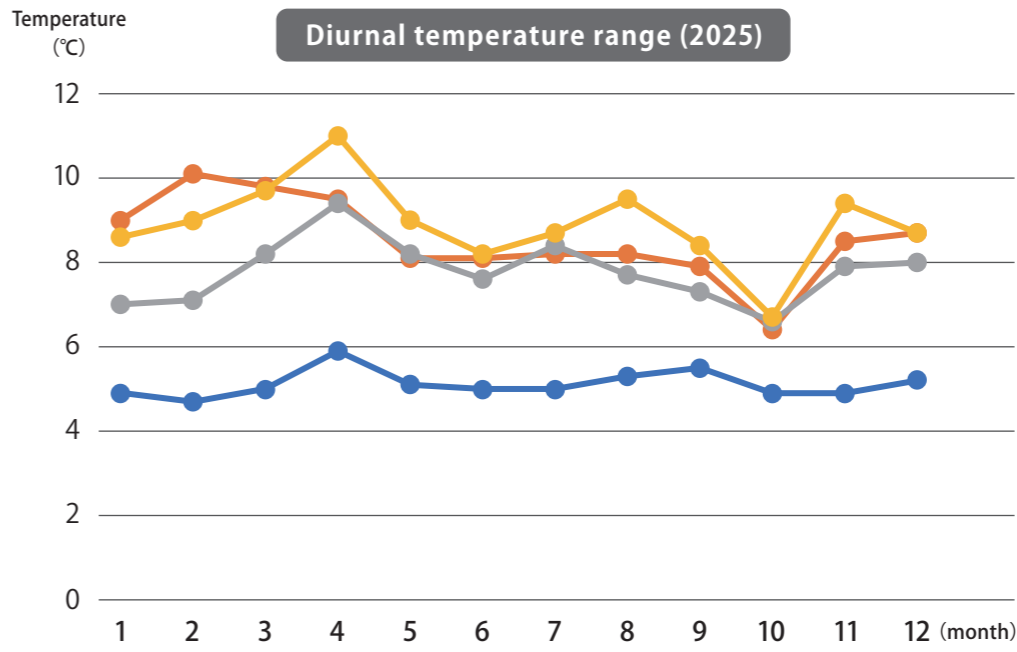
Point 2 Power Distribution System Independent From the Mainland

Okinawa has stable power distribution based in thermal power generation which is independent from the Japanese mainland. This makes favorable conditions for mitigating and diversifying the risk of halted operations or data loss due to power shortages.



Point 3 Consistent, Comfortable Climate!

Okinawa Prefecture is the only subtropical region in Japan and has a mild climate year-round which generally has no snowfall. For example, the required environmental temperature for a clean room in semiconductor manufacturing is said to be 23 degrees Celsius, which is near the average temperature for Okinawa. Temperature fluctuations throughout the day are markedly smaller here than in other prefectures as well, and this adds the benefit of making it possible to reduce the costs of maintaining a constant temperature. In this way, a climate with small temperature differences is another unique advantage of being located in Okinawa.



Source: Meteorological Agency (2025)

Distribution Networks Connecting People and Goods Across Asia

With a geographical advantage located at the heart of East Asia, Okinawa beats with energy and has been garnering attention as a vital business hub interlocked with the Asian economy. In order to develop Okinawa as an international business city connecting Japan and Asia, Okinawa Prefecture is working on building an international logistics network centered around Naha Airport and Naha Port, Okinawa's sky and sea gateways. This distribution hub will be excellent for companies looking to expand in Asia.



International flights

Taipei	70flights/week	Required Travel Time 1:25 (640km)
Kaohsiung	13flights/week	Required Travel Time 1:45 (843km)
Taichung	6flights/week	Required Travel Time 1:40 (746km)
Seoul	42flights/week	Required Travel Time 2:20 (1,260km)
Busan	14flights/week	Required Travel Time 2:15 (1,008km)
Hong Kong	28flights/week	Required Travel Time 2:35 (1,440km)
Beijing	2flights/week	Required Travel Time 3:40 (1,852km)
Shanghai	21flights/week	Required Travel Time 2:00 (806km)
Fuzhou	2flights/week	Required Travel Time 2:50 (803km)
Bangkok	4flights/week	Required Travel Time 4:40 (3,130km)
Kuala Lumpur	5flights/week	Required Travel Time 7:30 (3,800km)
Singapore	6flights/week	Required Travel Time 5:10 (3,760km)

Domestic flights

Tokyo	42flights/day	Required Travel Time 2:20 (1,687km)
Nagoya	14flights/day	Required Travel Time 2:05 (1,483km)
Kansai	27flights/day	Required Travel Time 1:50 (1,261km)
Fukuoka	24flights/day	Required Travel Time 1:30 (1,008km)
Kagoshima	2flights/day	Required Travel Time 1:15 (758km)
Okayama	3flights/day	Required Travel Time 1:50 (1,165km)
Haneda	36flights/day	Narita 6flights/day
Kansai	14flights/day	Itami 5flights/day, Kobe 8flights/day

*5 flights/week between Seoul and Shimoi Island
 *5 flights/week between Seoul and Ishigaki Island
 *7 flights/week between Hong Kong and Ishigaki Island

*The time required is an estimate from Naha Airport to each destination.

Naha Airport: An airport that connects major cities in Japan and Asia

Located within approximately four hours of major cities in Japan and key Asian destinations, Naha Airport, which is supported by an extensive air route network, holds a strategic advantage as an international air logistics hub. Okinawa Prefecture is promoting a transportation model that uses cargo space on passenger flights to and from Naha Airport, in addition to dedicated freighters, in order to establish Okinawa as an international logistics hub. In response to growing demand for high-frequency, multi-destination shipments driven by e-commerce and other sectors, Okinawa is working to expand this model and to enhance awareness, while strengthening logistics functions to reinforce and expand the international air cargo network.

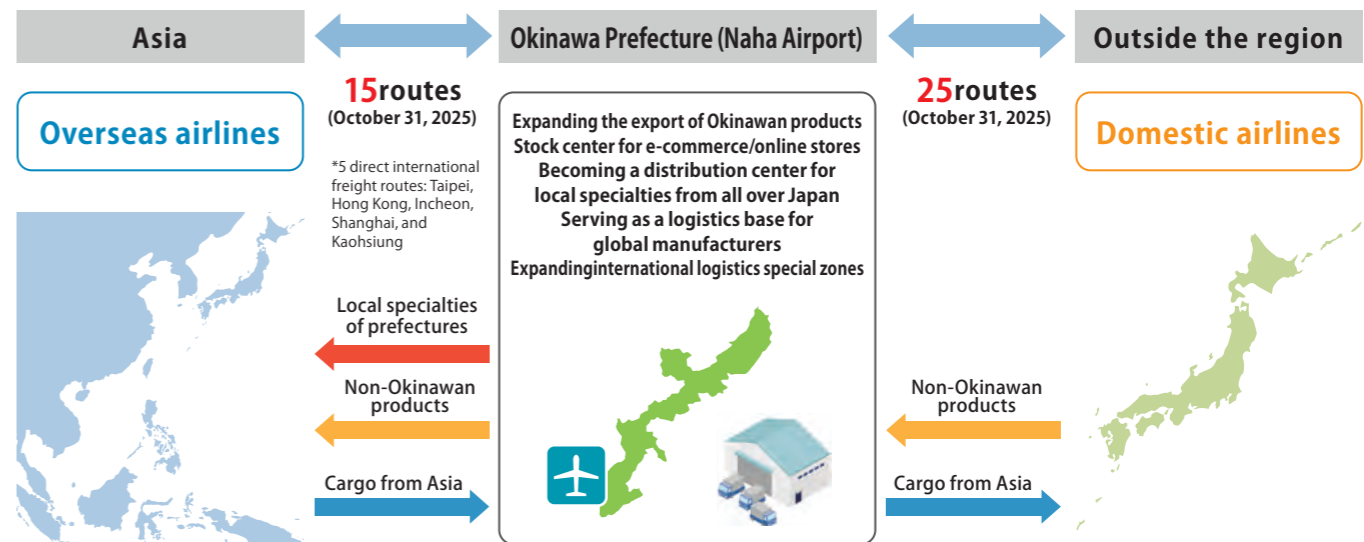
Okinawa International Logistics Hub

Key features

- ◆ Development of an air cargo network utilizing cargo space on passenger flights to and from Naha Airport, in addition to dedicated freighters
- ◆ Leveraging the dynamism of Asia
- ◆ Responding to e-commerce and diversifying logistics needs

Effects

- ◆ Establishment of a high-performance international logistics hub with low costs, improved convenience, and a diversified logistics network
- ◆ Establishing sales channels for both Okinawa and non-Okinawan products, fostering further industrial integration



Operation of Domestic Cargo Planes

On April 11, 2024, domestic freighter operations commenced at Naha Airport. The aircraft are owned by the Yamato Group and operated by the JAL Group. Initially, there was one daily one-way flight from Narita Airport and another one-way flight to Kitakyushu Airport. As of December 2, 2025, there has been one daily round-trip flight between Narita Airport and Naha Airport.

(Flight Schedule: December 2, 2025, to February 28, 2026)

■ Narita Airport 6:00 am → Naha Airport 9:20 am ■ Naha Airport 1:00 pm → Narita Airport 3:35 pm

沖縄大交易会

The 14th Great Okinawa Trade Fair 2026

Face-to-Face Business Introductions | **Online Business Introductions**

[Date] Thursday, November 26 & Friday, November 27, 2026 | [Date] August–December 2026

[Venue] OKINAWA SUNTORY ARENA | [Venue] Online only

One of the largest food trade fairs, the Great Okinawa Trade Fair seeks to expand overseas sales routes for specialty products of Okinawa and Japan utilizing its international logistics hub. This highly successful event has been held 13 times. The Great Okinawa Trade Fair 2025 attracted about 400 buyers and suppliers from both Japan and overseas, and facilitated about 2,600 business introductions.

[Inquiries]
 Executive Committee of Great Okinawa Trade Fair (inside the Okinawa Industry Promotion Public Corporation)
 TEL:+81-98-851-7463 / FAX:+81-98-859-6233
 E-mail: daikouekikai@okinawa-ric.or.jp

Official Website | Video (about 10 min.) (Japanese language only)

Naha Port : An international trade hub linking Japan and Asia

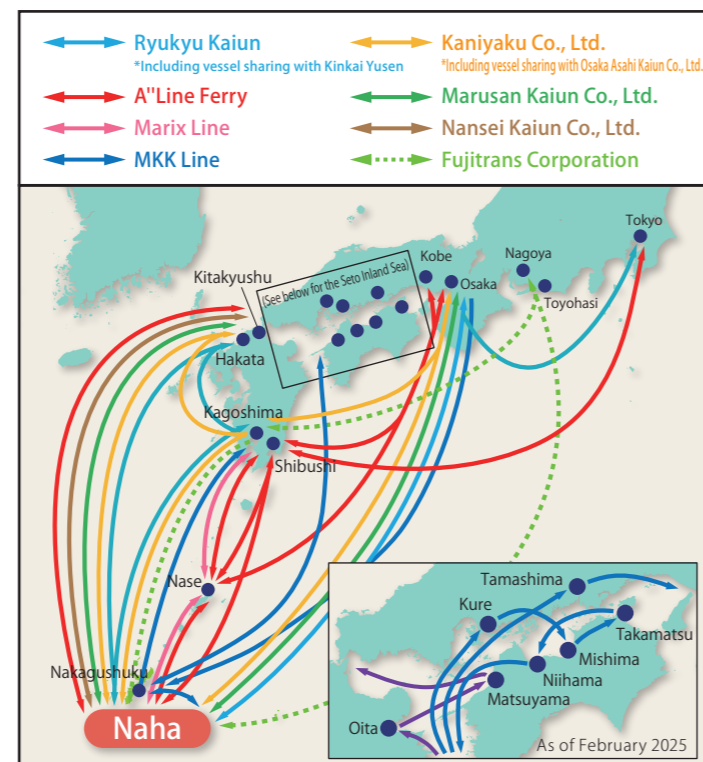
(1) Marine transport network connecting Japan with other countries

As the maritime gateway for Okinawa, Naha Port has 7 regular international container routes serving Taiwan, North America, China, South Korea, and the Philippines and 29 regular and irregular domestic routes (of which 10 are intraprefectural) featuring RORO, general cargo, and other ships serving such locations as Tokyo, Osaka, Kobe, Hakata, and Kagoshima.

Naha Port regular routes (overseas)



Naha's regular and irregular shipping routes (out of prefecture)



Naha's regular foreign trade shipping routes (as of December 2025)

Region	Port of Call	Ship Type	Gross Tonnage (International Tonnage)	Frequency	Time of Passage	Operator
North America	Los Angeles (San Pedro) — Auckland — Yokohama — Naha — Busan-Qingdao — Shanghai-Busan — Los Angeles (San Pedro)	Full container	82,794	1/wk	26d	APL
	Long Beach — Honolulu — Apra (Guam) — Naha — Ningbo — Shanghai — Long Beach	Full container	32,575	1/wk	15d	MATSON
China	Shanghai — Osaka — Kobe — Naha — Shanghai	Full container	9,994	1/wk	1d	Shanghai Jinjiang Shipping
Philippines	Davao — Naha — (Hakata) — (Kobe) — Davao	Freezer container	8,597	1/2wk	3d	FRESH CARRIERS
East Asia (Taiwan)	*Sakishima route extension Naha — Hirara — Ishigaki — Kaohsiung — Naha — Hakata — Kagoshima — Naha	RORO ships	22,633	1/wk	2d	RKK Line
	*Sakishima route extension Naha — Hirara — Ishigaki — Xiamen — Kaohsiung — Naha — Hirara — Ishigaki — Naha	General cargo ship	3,409	1/2wk	3d	NAMSUNG
	Naha (1st) — Yatsushiro — Busan — Matsuyama — Oita — Shibushi — Naha (2nd) — Keelung — Taichung — Kaohsiung — Naha (1st)	Full container	9,996	1/wk	3d	Ehime Ocean Line

*Final ports are in red *Ports of call in () are irregular ports

(2) Measures to strengthen functionality as an international logistics hub

Measures are being implemented to increase the volume of cargo handled, with the aim of realizing an international maritime logistics hub connecting domestic markets with East Asia.

1 Facility maintenance

The Naha Port International Container Terminal has been fitted with gantry cranes and reefer power supply facilities, and the Naha Port Logistics Hub is being developed on an adjacent site.



Naha Port Logistics Hub

Currently, at Naha Port, which handles the majority of Okinawa Prefecture's port cargo, the development of the Naha Port General Distribution Center is underway. We aim to increase the amount of cargo handled by promoting the collection and creation of cargo, improving the sophistication of our logistics, and focusing on creating new value-adding industries, such as distribution and processing. The first phase of the Naha Port Integrated Logistics Center opened in May of 2019, and we are currently analyzing the possibilities for the commercialization of the second and third phases of the Integrated Logistics Center.

Floor specifications of logistics building	Dedicated footprint area	Tenants	Handled cargo (Results)
3rd floor: dry goods only	approximately 10,495m ²	Okinawa Koun Co., Ltd., Maruei Logistics Co., Ltd., Ryukyus Logistics Co., Ltd.,	Food, Beverages, General Goods, etc.
2nd floor: frozen, refrigerated, dry goods	"	Okinawa Prefecture Black Sugar Cooperative, Okinawa Kyuso Co., Ltd. Ryukyu Freight Forwarders Co., Ltd.,	Okinawa black sugar, inshore tuna, etc.
1st floor: frozen and refrigerated goods only	"	Nichirei Logistics Kyushu, Inc.	Various frozen and refrigerated foods

2 Initiatives to increase foreign cargo

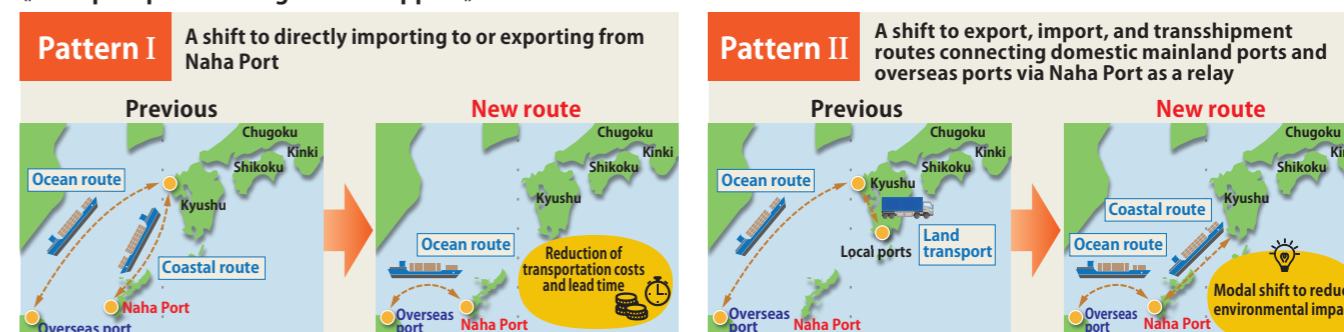
Support systems such as the Naha Port Transport Efficiency Support Project have been set up to encourage companies to ship more cargo through Okinawa and to establish new sea routes.

Scan the 2D code for details on the Naha Port Transport Efficiency Support Project ▶

Naha Port Transport Streamlining Support Project

- Objective: The Naha Port Transport Streamlining Support Project aims to promote the expansion of international container cargo and streamline transport using Naha Port. It will achieve this by helping operators shift to more efficient transportation patterns for international container cargo via Naha Port.
- Target operators: Shippers and logistics companies transporting international container cargo
- Support: We will subsidize 50% of the expenses related to maritime transportation costs, land transportation costs, and storage costs incurred after shifting the transportation route utilizing Naha Port, with a maximum subsidy of 1 million yen per project.
- Main requirements for support:
 - 1) Containers must be imported or exported through Naha Port
 - 2) Transportation must generally use transport pattern I or II (see chart below).
 - 3) Applicants must meet the project's objectives and be planning to use Naha Port continuously

«Transport patterns eligible for support»



Inquiries: Naha Port Management Association, Planning and Construction Department, Minato Promotion Division TEL +81-98-868-2582

Average age in the nation
#1



Percentage of residents returning to home prefecture
#1

As we move into an era of population decline, Okinawa Prefecture is still experiencing population growth. Okinawa is also Japan's youngest prefecture, with the average age by prefecture the lowest at 43.5 years old and Japan's highest proportion of young people (ages 0 to 14) at 16.6%. Each year, a large number of students enroll in the prefecture's industrial education institutions, where the human resources who will lead the manufacturing industry of the future are trained.

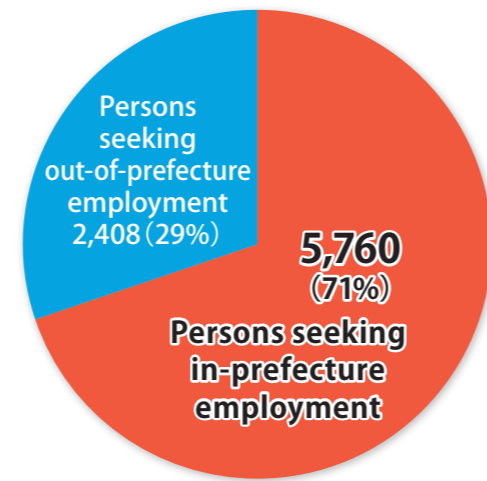
(Source: The Basic Survey on Social Security and Population Issues, The Population Census by the Statistics Bureau of Japan)

71% of new graduates want to find employment inside of Japan.

■ Data on the employment status of new graduates (job seekers) in the prefecture.

■ Employment status of new graduates

	High school	Junior college	University	Vocational schools, etc.	Total
#of graduates (people)	21,095	529	3,772	3,661	29,057
#of job seekers (people)	1,703	394	2,865	3,206	8,168
Within the prefecture	1,099	263	1,871	2,527	5,760
Outside the prefecture	604	131	994	679	2,408
#of people with unofficial job offers (people)	1,692	375	2,488	2,981	7,536
Within the prefecture	1,092	254	1,563	2,320	5,229
Outside the prefecture	600	121	925	661	2,307
Unofficial job offer rate	99.4%	95.2%	86.8%	93.0%	92.3%
Within the prefecture	99.4%	96.6%	83.5%	91.8%	90.8%
Outside the prefecture	99.3%	92.4%	93.1%	97.3%	95.8%



Source: Employment Security Division, Employment Security Department, Okinawa Bureau of Labor Graduation in March 2025 (as of March 2025)

■ Capacity of universities, technical colleges, prefectural technical high schools, etc.

■ Polytechnic colleges

	Name of school	Capacity	Name of school	Capacity
North	National Institute of Technology, Okinawa College (Regular Course)	160	Nago Commercial and Technical High School	200
	Okinawa Prefectural Mirai Senior High School of Technology	320	Misato Technical High School	280
Central	University of the Ryukyus (Faculty of Engineering)	350		
	South	Urasoe Technical High School	280	Naha Technical High School
		Nambu Technical High School	120	Okinawa Technical High School
Remote Islands	Yaeyama Commercial and Technical High School	160	Miyako Technical High School	120
Overall total		2,630		

Name of school	Capacity
Okinawa Polytechnic College	190
Gushikawa Polytechnic College	135
Urasoe Polytechnic College	130
Total	455

*Okinawa Polytechnic Development Promotion Center also has a Faculty of Engineering.

Source: Okinawa Prefectural Board of Education, schools' websites

Education in Okinawa

Okinawa Prefecture provides an educational system and guidance on how to enroll in it in multiple languages with the goal of becoming a place where foreign residents can also feel easy when it comes to living here. The local government conducts information sessions about student life and holds orientation sessions on its systems for helping students to enroll. Thanks to its efforts to promote supplying information about the educational system with non-Japanese in mind, anyone relocating here with school-age children should have no concerns on this front.

International Schools in Okinawa

- **Okinawa Amicus International (Kindergarten, Elementary and Junior High School)**
1212-1 Enobi, Uruma City TEL: +81-98-979-4711
<http://www.amicus.ed.jp/en/>
- **Okinawa Christian School International**
1835 Zakimi, Yomitan Village TEL: +81-98-958-3000
<http://ocsi.org>
- **New Life Academy**
134-1 Noborimata, Nakagusuku Village TEL: +81-98-870-3893
<http://www.newlifeacademy.com>
- **Okinawa International School**
143 Tomizato, Tamagusuku, Nanjo City TEL: +81-98-948-7711
<https://ois.ac.jp/>
- **Zion Christian Academy International**
586-10 Kuwae, Chatan Town TEL: +81-98-936-9986
<https://www.zcaiokinawa.org/>
- **Busy Bee School**
885 Kitamae, Chatan Town TEL: +81-98-935-4751
<https://www.busybee-school.jp/>
- **Da Vinci International School**
449-3 Uezu, Uruma City TEL: +81-98-973-4637
<https://www.davinci.okinawa/>
- **World Mission Christian School**
572-2 Minami-Uehara, Nakagusuku Village TEL: +81-98-895-6670
<https://www.wmcs-oki.net/>
- **Amerasian School In Okinawa, NPO**
1-15-22 Shimashi, Ginowan City TEL: +81-98-896-1966
<https://sites.google.com/amerasianschoolokinawa.org/home-en/>

Japanese Classes + Japanese Language Vocational School

- **Okinawa International Exchange & Human Resources Development Foundation**
3F, 3-4-1 Isa, Ginowan City TEL: +81-98-942-9212
<http://www.oihf.or.jp>
- **ICLC Okinawa Japanese Language School**
Sun Hills Tabaru 2F, 1-4-1 Tabaru, Naha City TEL: +81-98-859-3881
<https://k-stworld.com/>
- **SAELU Gakuin**
2-4-4 Tomari, Naha City TEL: +81-98-943-3297
<http://www.saelu.net/>
- **Okinawa JCS Japanese Language School**
1-23-7 Kume 1-chome, Naha City TEL: +81-80-4913-0952
<https://okinawajcs.com/>
- **Step World Japanese Language School**
1-10-8 Uenoya, Naha City TEL: +81-98-860-5353
<https://k-stworld.com/>
- **Nichia Institute of Foreign Languages**
1-1-1 Matsukawa, Naha City TEL: +81-98-833-8666
<https://nichia1997.com/english/eindex.htm>
- **Gores Academy Educational Corporation Japan Institute of Culture and Economics**
2-12-14 Nishi, Naha City TEL: +81-98-869-8686
<https://gores.ac.jp/en/>
- **JSL Japan Academy**
1-1-1 Nakanishi, Urasoe City TEL: +81-98-875-1456
<http://www.jslnippon.jp/>

