

(3) Tomoyose-Higashi District, Yaese Town

■ Overview and location

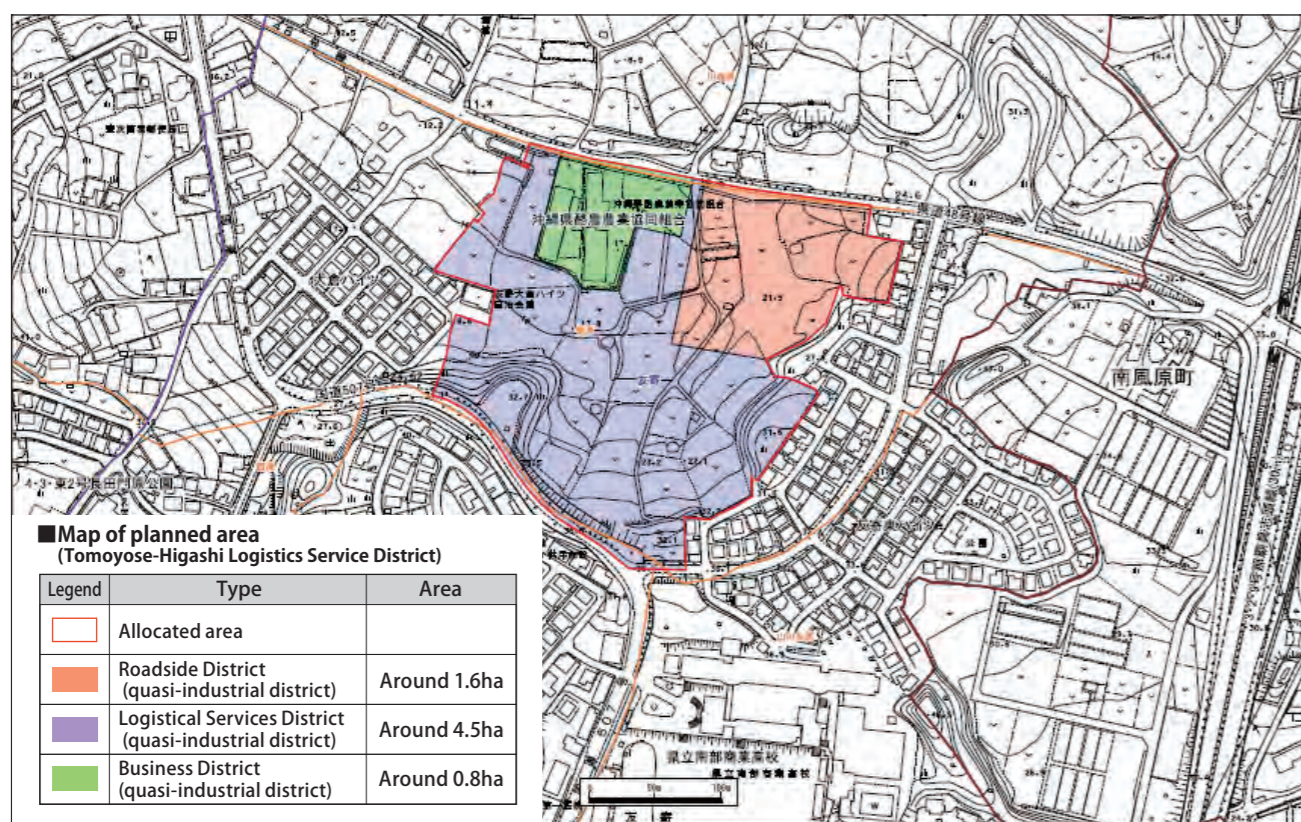
Located next to Prefectural Route 48 and near many major roads including the Naha Airport Expressway (Haeburu-Minami Interchange) and National Highway No. 507, this area in the northeast of Yaese Town couldn't be more conveniently located.

To get the most out of this prime land and vitalize Yaese Town, measures are underway to attract operators of commercial buildings such as retail stores, industrial facilities such as logistics hubs and warehouses, and business facilities such as offices.



● 2 minutes by car (around 1km) to Haeburu-Minami Interchange

■ Layout (tentative)



■ Planned schedule

Work	2024	2025	2026	2027	2028
Recruitment of companies	Recruitment of companies/application process				
Development plan	Surveying / measurement / design / project planning / application for approval of land readjustment projects / building of foundations				Service started

*The above schedule is correct at present but has not been finalized. (As of January 2026)

■ Inquiries about recruitment of companies: Planning and Finance Division, General Affairs Department, Yaese Town Hall TEL +81-98-998-2668

■ Inquiries about urban planning: Urban Development Division, Economic Affairs and Construction Department, Yaese Town Hall TEL +81-98-998-6989

(4) Priority Business Attraction Districts in Okinawa City

In FY 2022, under the Fifth Okinawa City Basic Policy for Business Attraction, manufacturing and transportation industries were newly added to the previously prioritized sectors of information and communications and tourism-related industries. In addition, four priority districts were designated to secure industrial land for business establishment.

The city will continue to examine concrete development plans for these districts while taking into consideration the diverse business needs of the region.

■ Layout (tentative)



① Former Okinawa Juvenile Training School Site

- Area: Approx. 3 hectares
- Access: Approx. 650 meters to Okinawa-Minami IC

Located adjacent to Okinawa Arena and Koza Sports Park and near the Okinawa Loop Road, enabling connectivity with the Port of Nakagusukuwan.

② Former Chibana Golf Course Site

- Area: Approx. 6 hectares
- Access: Approx. 1.8 km to Okinawa-Kita IC
- Access: Approx. 450 meters to National Route 329

Daily life service facilities are concentrated within walking distance. The site is close to Prefectural Route 36 Bypass and the Okinawa Loop Road and provides access to Port of Nakagusukuwan.

③ Kojia-Ozato Agricultural Promotion Area

- Area: Approx. 20 hectares ※
- Access: Approx. 6.4 km to Okinawa-Kita IC
- Access: Approx. 4.2 km to (tentative name) Ikento IC

Located near Port of Nakagusukuwan, with surrounding residential development progressing.

④ Ikento District

- Area: Approx. 112 hectares ※
- Access: (Tentative) Ikento IC planned within the district

Designated as a quasi-industrial zone (mixed residential and factory area) and positioned as an industrial attraction zone in the City Master Plan within the International Logistics Hub Industry Accumulation Area.

■ About company attraction / Business Attraction Division, Okinawa City TEL: +81-98-929-3308

※Specific zoning and site area will be determined in consideration of business needs.

Comments From Companies That Have Expanded Into Okinawa Prefecture

CASE 01 **I-PEX**



Executive Officer, New Business Development Division & President, I-PEX Global Operations, Inc. **Tomohiro Nishiyama**

I-PEX Inc.

<https://corp.i-pex.com>

- Industry type: Manufacturing and Sales of Electronic Components
- Expansion into Okinawa: February 2019
- Location: Tomigusuku City, Uruma City

Q1 What led your company to expand into Okinawa?

In order to provide support for our group's overseas sales staff and 15 overseas subsidiaries, we established the International Management Office in Tomigusuku City in February 2019, followed by the incorporation of I-PEX Global Operations, Inc. in May of the same year. In January 2020, we launched operations at a manufacturing plant within the Okinawa Prefecture Foundry and Tooling Industry Promotion Facility in Uruma City. In December 2022, we opened the Okinawa Innovation Center as an R&D hub.

Q2 What are the key strengths and attractions of Okinawa?

The logistics and air networks centered around the tourism industry in Okinawa are well-developed, and there is a large pool of multilingual talent fluent in English and Chinese. In addition, Okinawa provides a strong advantage in recruiting talented young professionals with numerous technical education institutions producing approximately 3,000 prospective engineers annually. The comprehensive manufacturing support programs provided by Okinawa Prefecture and the Okinawa General Bureau of the Cabinet Office provide significant benefits for companies undertaking new initiatives. Furthermore, the ability to collaborate with local companies creates promising opportunities for new business development.

Q3 What operations do you conduct in Okinawa, and what are your future plans?

I-PEX Global Operations handles group-wide BPO and international management functions with specialists managing a broad range of roles. Our Uruma plant manufactures press dies for metal terminals. The Okinawa Innovation Center conducts research into hydrogen production and power generation technologies and is working to apply proprietary odor sensor technology to local industries. In collaboration with such research institutions as the University of the Ryukyus and private-sector partners, we are engaged in initiatives aimed at addressing regional challenges. With precision engineering and technological innovation at its core, the center serves as a bridge connecting Okinawa to the world while striving to contribute to a sustainable society.



Exterior view of the Okinawa Innovation Center (Uruma City)

CASE 02 **ACRORAD**



Representative Director and President **John Ellwood**

Acrorad Co., Ltd.

<https://www.acrorad.co.jp/>

- Industry type: Semiconductor Manufacturing
- Expansion into Okinawa: May 2000
- Location: Uruma City

Q1 What led your company to expand into Okinawa?

Semiconductor materials for radiation measurements that we had researched for many years were recognized for their performance and were adopted for space radiation observation satellites. In order to further expand the business, our engineers established a new company. At that time, Okinawa made available industrial land and offered strong opportunities to secure various technology development subsidies, making it an attractive location for our new venture.

Q2 What are the key strengths and attractions of Okinawa?

We have been in Okinawa for more than 25 years. While we faced the challenges of logistics costs, lack of an industrial infrastructure, and the availability of core technical talent, we steadily overcome these headwinds—sometimes strong ones—together with local employees. Embracing both the relaxed Uchina Time spirit and the resilient Nankurunaisa mindset, we have continued to gradually refine our proprietary semiconductor manufacturing technologies. Clients who visit us from afar are often surprised to find highly stable and sophisticated manufacturing processes that dispel the preconceived notions associated with Okinawa. Many remark that the long journey was worthwhile before heading off to enjoy Okinawa's marine leisure activities. Okinawa is particularly well received by overseas executives and researchers as a destination that combines business with pleasure.

Q3 What operations do you conduct in Okinawa, and what are your future plans?

We develop and manufacture sensors using CdTe (cadmium telluride), a semiconductor material that enables imaging of X-rays and gamma rays. These CdTe sensors allow clearer imaging with lower radiation exposure and can even distinguish between different materials. Our sensors are used in panoramic dental X-ray systems and are increasingly applied in X-ray foreign object inspection systems for food products. Recently, we expanded our factory to meet growing demand since our sensors are essential components in an innovative medical X-ray CT system first commercialized by our parent company, Siemens Healthineers (Germany). In a few years, we expect CT systems equipped with our semiconductor sensors to be used in leading hospitals around the world.



CASE 03 **株式会社 ADO**



President and COO **Tsuyoshi Hida**

ADO Co., Ltd.

<https://www.advance-e.jp/>

- Industry type: Development and Manufacturing of Valves for Fluid Control Systems
- Expansion into Okinawa: February 2015
- Location: Uruma City

Q1 What led your company to expand into Okinawa?

With three strategic pillars—expanding production bases in Asia, diversifying business locations with a view to business continuity, and promoting manufacturing under the “Made in Japan” philosophy—we decided to establish operations in Okinawa, strategically located in the heart of Asia. Okinawa offers a strong network of technical high schools and vocational institutions, which provide access to young engineering talent. The proactive support and business attraction efforts of Okinawa Prefecture played an important role in our decision-making process.

Q2 What are the key strengths and attractions of Okinawa?

The prefecture actively promotes manufacturing industries and has implemented a range of programs that support technology development, productivity enhancement, and human resource development. This support creates an environment conducive to corporate growth and makes Okinawa an attractive destination for expanding companies. Many of the locally recruited employees have taken advantage of the prefecture's training subsidy program to upgrade skills at our parent company in Aichi Prefecture, and they are now contributing significantly to company operations. Additional support measures, including subsidies for capital investment and product development, further enhance Okinawa's appeal as a business location.

Q3 What operations do you conduct in Okinawa, and what are your future plans?

As a manufacturing subsidiary of Advance Electric Co., Inc., headquartered in Aichi Prefecture, we primarily manufacture fluid control valves for chemical solutions that are essential components of medical and environmental analysis equipment, designed to meet global standards. In recent years, we have expanded into the development and manufacturing of precision valves used in semiconductor fabrication facilities—essential to smartphones and AI technologies—seeking to enter new growth markets. For the precision valves for semiconductor plants, we have fully leveraged the technologies developed over many years and supported by Okinawa Prefecture's assistance programs since our establishment here. Through the manufacturing of critical components that support advanced global industries, we are committed to contributing to the industrial development of Okinawa.



CASE 04 **カサイエレクトロニクス株式会社**



General Manager, Digital Lab Division / Managing Director, Okinawa Office **Daisuke Tachibana**

Kasai-Elec CO., LTD.

<https://digi-robo-labo.okinawa>

- Industry type: Automation Systems Development / Robot System Integrator
- Expansion into Okinawa: June 2017
- Location: Itoman City, Ginowan City

Q1 What led your company to expand into Okinawa?

We initially expanded into Okinawa to establish a production base for our proprietary electrodeless lamps. Our products were registered as Okinawan products, and sales grew steadily. However, after receiving consultations from local companies regarding automation and witnessing the satisfaction of our clients upon delivery, I developed a strong sense of mission regarding the need to accelerate automation and digital transformation in Okinawa. Following the COVID-19 pandemic, we used a national business restructuring subsidy program to transition into our current robot system integrator (SIer) business.

Q2 What are the key strengths and attractions of Okinawa?

As a remote island prefecture with a population of just under 1.5 million, Okinawa may not appear highly attractive as a direct market or production hub. However, Okinawa's true strengths lie in its people and its network of partners. Approximately 3,000 STEM graduates emerge annually from universities, colleges of technology, and technical high schools in Okinawa. In particular, many high school graduates demonstrate a strong willingness to enter the workforce, and their motivation, combined with practical technical experience, means they can grow rapidly in development-oriented roles. In recent years, startups as well as highly specialized niche-leading companies have expanded into Okinawa. The level of technical expertise and manufacturing capabilities has risen significantly. With the right partners, I believe Okinawa offers a development environment comparable to that of Tokyo, Nagoya, or Osaka.

Q3 What operations do you conduct in Okinawa, and what are your future plans?

As the only robot system integrator based in Okinawa Prefecture, we provide services to clients in manufacturing, logistics, tourism, healthcare, and public administration within the prefecture and throughout Japan. In collaboration with the University of the Ryukyus Hospital and supported by funding from the Cabinet Office, we are developing a medical transport robot system manufactured in Okinawa—a rare initiative in Japan. Demonstration testing at the hospital is scheduled to begin in January 2026. Based on the insights gained from this project, we plan to develop Okinawa-made robot transport systems for manufacturing, logistics, and tourism applications. Ultimately, our objective is to develop robot systems that can be sold nationwide as well as to become a core company supporting other firms expanding into Okinawa—just as we were supported by many people when we first established operations here.



Aviation-Related Business Cluster in Okinawa

(1) An Aviation-Related Business Cluster Centered on MRO

Leveraging its strategic location near Asia, where aviation demand is expected to grow, Okinawa Prefecture aims to establish Japan's first aviation-related business cluster focusing on Maintenance, Repair, and Overhaul (MRO).

As the first step in this initiative, an aircraft maintenance facility was established at Naha Airport and began operations in November 2018, serving as the starting point for the aviation-related business cluster. MRO Japan Co., Ltd., the only specialized aircraft maintenance company in Japan, operates within this facility. As a core company of the aviation-related business cluster that undertakes aircraft maintenance, it has steadily expanded its operations, creating new jobs and having positive economic impacts.

With aircraft maintenance at its core, Okinawa Prefecture aims to develop a unique MRO-centered aviation-related business cluster, incorporating the maintenance of equipment and engines, storage and distribution of parts, provision of maintenance-related technical support, and the training of human resources for employment in aviation-related industries.



Maintenance of aircraft (Large dock inside the aircraft maintenance facility, MRO Japan Co., Ltd.)

(2) Progress and Achievements in Establishing the Aviation-Related Business Cluster

Since the launch of the aircraft maintenance facility, the number of employees in Okinawa's aviation-related industries has grown to approximately 730 as of April 2025, demonstrating the industry's role as a key employer of engineering professionals. The National Institute of Technology, Okinawa College has established an Aviation Engineer Program to develop skilled professionals for the aviation-related industry. Graduates have found employment at airlines, aircraft maintenance companies, and other aviation-related businesses. Additionally, some graduates from local universities and high schools have also secured jobs at maintenance companies. Over the six-year period from FY 2019 to FY 2024, the aviation-related industry cluster achieved strong growth in newly created demand with the cumulative total estimated at approximately 21.8 billion yen.

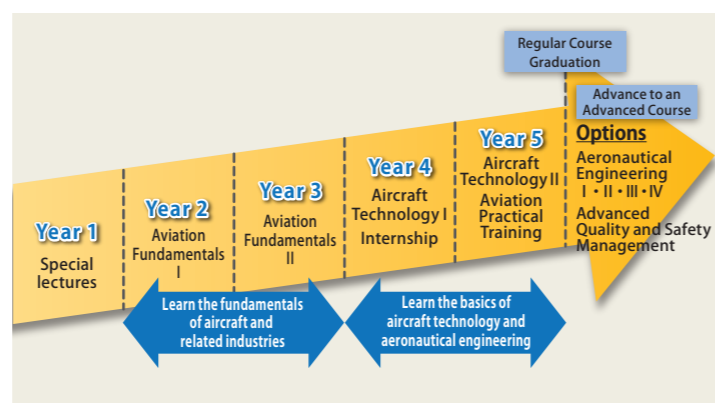
As the core of the cluster, the aircraft maintenance business operator has expanded beyond domestic airline services. In 2022, it obtained aircraft maintenance facility certification from the European Union Aviation Safety Agency (EASA), enabling it to attract maintenance contracts from international airlines. The company has also diversified its business by entering the leaseback maintenance sector, further solidifying the foundation of the aviation-related business cluster.

■ Achievements of the aviation-related business cluster in Okinawa



(*1) Cumulative results of companies participating in the cluster from FY 2019 to FY 2024

■ Outline of Aviation Engineering Program



Source: School Guide, National Institute of Technology, Okinawa College

(3) Toward a New Stage in the Aviation-Related Business Cluster

Okinawa Prefecture is working to enhance the business environment toward a new stage in the aviation-related business cluster.

We aim to further expand the scale of our aircraft maintenance business, including the launch of surveys for the establishment of new hangars, and to expand and add value to our business domain with a cargo plane refurbishment service.

In addition, as the potential second core of the cluster, we will begin full-scale studies on attracting companies related to equipment and engine maintenance.

With the expansion of the aircraft maintenance business and the maintenance of equipment and engines, new demands are expected to arise. We will actively work on attracting businesses in logistics and parts industries, manufacturing and processing, and BPO in technical fields, and DX and AI utilization.

For the growth of the cluster, it is essential to secure and develop human resources talented in aviation to support these businesses. In an effort to expand the talent pool in the aviation sector, we will hold joint briefings for aviation-related industries, in collaboration with cluster companies, as well as aviation courses and events in cooperation with educational institutions in Okinawa.



	2019~	2025~	2029~
Aircraft MRO	Aircraft maintenance Aircraft coating	(Scale expanded) (Coating consultation started) EASA certification	Leaseback maintenance started Cargo plane (P2F*) refurbishment started
Equipment MRO		Feasibility study	Attracted as the second core
Engines MRO			
Logistics and parts	Site location by aircraft maintenance parts and materials distributors		Feasibility study in cooperation with MRO Possibility of a large parts center
Manufacturing and processing		Generate demand in line with the expansion of MRO	Local manufacturing and processing businesses participate in the aviation sector Attract aviation-related manufacturing and processing businesses from other prefectures
Technical fields BPO	Maintenance data management	Positive effects on surrounding industries	Manufacturer technical service started
DX and AI utilization		Digital transformation of back-office operations	Exploration of participation by local IT-related industries
Talent acquisition and development	Aviation Engineer Program	Efforts to expand the base (industry-administration-academia initiative)	Retain human resources to support the cluster

(*) P2F: Passenger to Freight

(4) About the Okinawa Aviation Industry Cluster Promotion Association

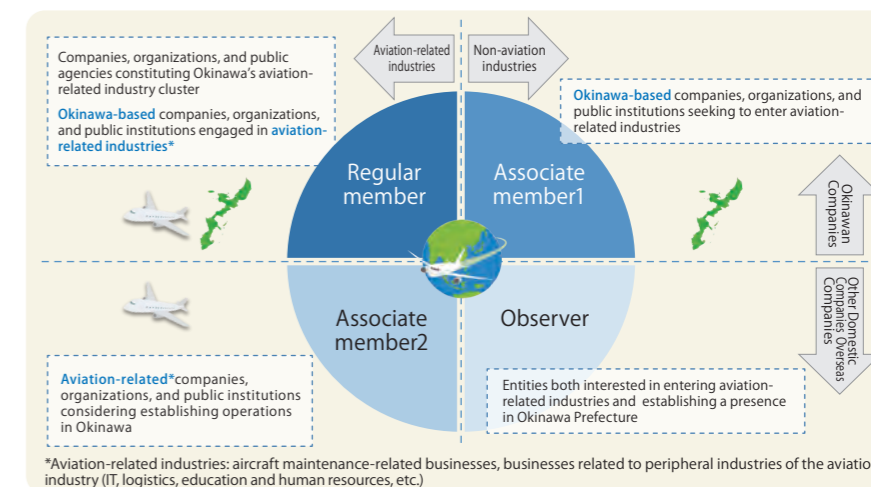
The Okinawa Aviation Industry Cluster Promotion Association was established with the goal of promoting aviation-related industries in order to create a cluster with a concentration of aviation-related industries and peripheral industries, centered on aircraft maintenance, with 51 members having participated as of the end of December 2025.

Through regular information provision and opinion exchange, the Association collaboratively undertakes initiatives for securing and developing aviation talent in Okinawa in response to increasing demand.

Initiatives

- Disseminating information via digital newsletters and websites, etc.
- Productivity improvement through collaboration among companies
- Promotion for public relations and sales channel development
- Measures to secure and develop talented individuals to lead aviation-related industries
- Encouraging companies entering aviation-related industries

Joining this association is free of charge. For details on applying and registered members, please refer to the website on the right (see 2D Code).



Building a Startup Ecosystem



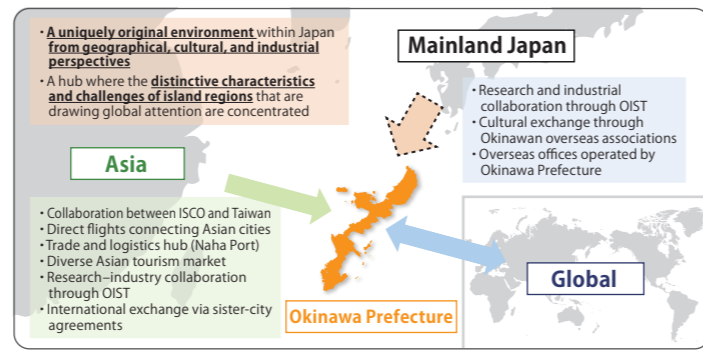
Okinawa Prefecture established the Okinawa Startup Ecosystem Consortium comprising organizations from industry, academia, government, and finance with the aim of becoming one of Asia's leading startup hubs. (As of January 2026, 79 organizations participate in the consortium.) By enhancing the functions of the startup ecosystem, Okinawa is creating an environment in which startups can emerge and grow autonomously. In June 2025, Okinawa was selected by the Cabinet Office as a "NEXT Global Hub City." Going forward, Okinawa will collaborate with national and related institutions to strengthen its position as a leading startup hub in Asia.

Supporters of the Startup Ecosystem (as of January 2026)



Priority Industry Sectors with High Economic Impact Potential

- Tourism**: Creation of next-generation tourism experiences and development of sustainable destinations
- Healthcare**: Establishment of a wellness hub supported by sustainable culture and technology
- Energy**: Resilient and self-sufficient lifeline systems capable of addressing disaster-related isolation
- Circular Economy**: Priority Industry Sectors with High Economic Impact Potential

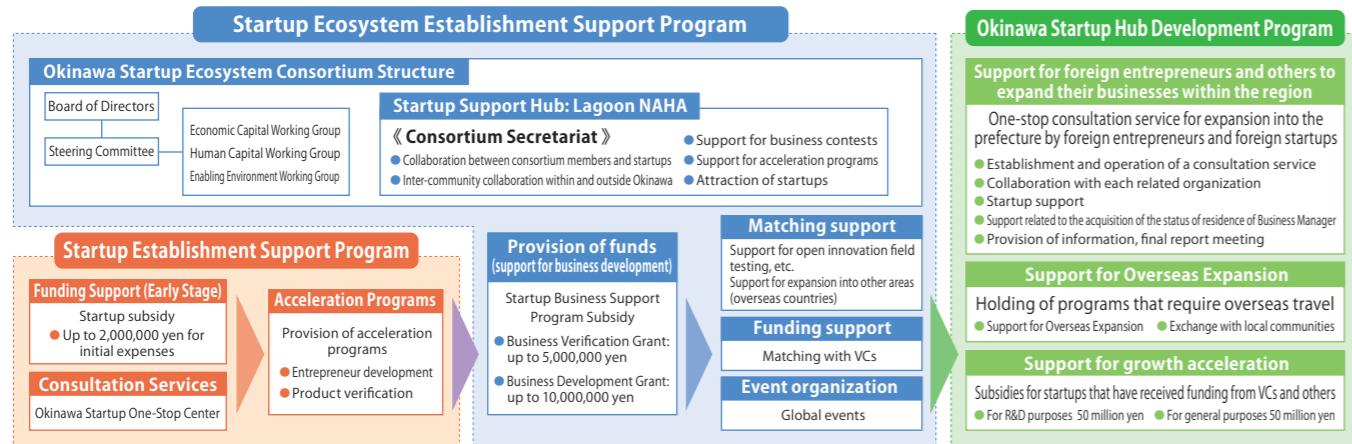


- ### Okinawa's Competitive Advantages
- POINT 01**: In addition to serving as a gateway to Asia with access to a market of approximately 2.2 billion people within four hours by air, Okinawa offers significant potential to attract overseas resources through the presence of world-class research institutions with advanced scientific and technological capabilities, as well as extensive global networks that include Okinawan overseas associations.
 - POINT 02**: Okinawa's geographic characteristics as an island region provide a favorable environment for demonstration experiments. From a blue economy perspective, the prefecture is home to numerous growth sectors with the potential to become distinctive and globally advanced models.
 - POINT 03**: In addition to the Okinawa Startup Ecosystem Consortium, which brings together organizations from industry, academia, government, and finance, Okinawa benefits from a range of special policy frameworks, including the National Strategic Special Zones, the Information and Communications Industry Special Zone, and the Special Economic and Financial Revitalization Zone.

[Inquiries] Startup Ecosystem Consortium Office E-mail okst-info@okinawa-startup.jp

Support measures in Okinawa Prefecture

Reference: Version 2025



Startup Regional Expansion Support Program (Startup Visa)

To serve as a gateway for foreign entrepreneurs entering Japan, Okinawa Prefecture established the Okinawa Global Support Centre, offering comprehensive bilingual (Japanese/English) support for startup establishment, including assistance through the Startup Visa certification process.



Okinawa's Energy Policy for Achieving a Carbon-Free Society by FY2050

To play its part in building a carbon-free society by FY2050, Okinawa is promoting the expansion of clean energy facilities, while encouraging the use of tax incentives, such as the industrial innovation promotion zone system.

Okinawa Prefectural Clean Energy Initiative

Established March 2021 (amended March 2026) *Okinawa Prefectural Energy Plan

Future vision for FY2040: A low-carbon, disaster-resilient island energy society unique to Okinawa that supports sustainable growth

4 fundamental goals

- Maximization of renewable energy
- Transition to cleaner fuels
- Localization of energy production and consumption
- Balancing decarbonization with industrial development

Clean Energy

- Renewable energy
- Hydrogen and ammonia
- Natural gas

Trends and Targets for the Share of Renewable Energy Power Sources

Quantitative goals for FY2040: 24~30%

2030 Challenging goal: 26%

2030 Ambitious goal: 18%

Results: 6.2% (2016), 6.8% (2017), 7.2% (2018), 7.5% (2019), 8.2% (2020), 11.1% (2021), 12.0% (2022), 12.5% (2023)

Okinawa Prefecture One-Stop Consultation Desk for Clean Energy

Okinawa Prefecture has established a one-stop consultation desk to support the expansion of clean energy in the region. This consultation desk provides information and an advisory service on various support programs, such as subsidies and tax incentives, offered by the national and prefectural governments to those considering the installation of renewable energy facilities. Additionally, it offers consultation and support to local municipalities aiming to increase the adoption of renewable energy.

Okinawa Prefecture One-Stop Consultation Desk for Clean Energy

- Information provision and consultation service on subsidies, etc.**: Providing information on subsidies and other support programs offered by the national and prefectural
- Promotion of special tax incentives on renewable energy facilities, etc.**: Special tax incentives for renewable energy facilities, etc. (industrial innovation promotion zone system); Investment tax deduction (up to 15% deducted from corporate tax), etc.; Property tax exempted
- Consultation service and support for local municipalities to expand the introduction of renewable energy**: Consultation service and support for local municipalities that aim to expand the introduction of renewable energy

Check the 2D code on the right for contact information and details.

(Japanese language only)

Benefits of introducing renewable energy facilities

- Reduced electricity bills
- Electricity available during times of disaster
- Enhanced corporate image
- Reduced CO2 emissions

Inquiries: Industrial Policy Division TEL +81-98-866-2330 FAX +81-98-866-2440