

2026-2027

Okinawa Prefecture Industrial Site Guide

OKINAWA INDUSTRIAL LOCATION



**Okinawa : The Business
HUB Connecting Asia
and Japan**

Connecting
through
Okinawa



Okinawa Special Economic Zone



Table of Contents

- Overview of the Environment in Okinawa Prefecture 2
- Map of Okinawa 5

Five Advantages of Locating in Okinawa Prefecture

- 1** Geographic Features of Okinawa 7
- 2** Distribution Networks Connecting People and Goods Across Asia 9
- 3** Okinawa: A Hub for Young Talent and Bright Minds 13
- 4** Business Support Menu 15
- 5** Special Taxation in a Special Economic Zone 21

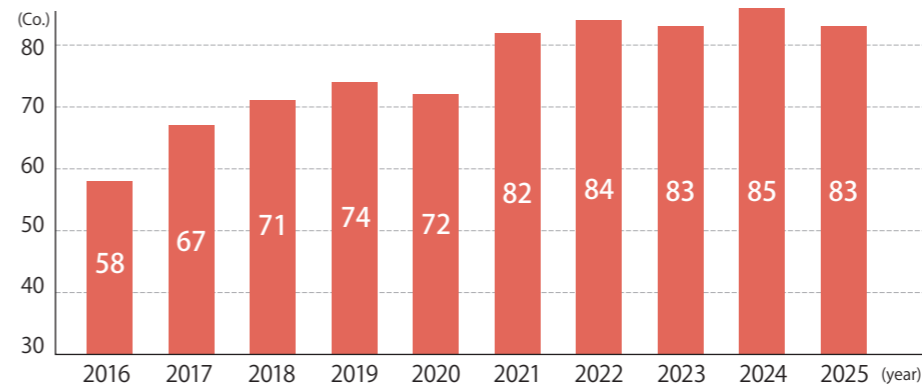
- Overview of International Distribution Base and Industry Cluster Zone [Uruma/Okinawa District] 25
- Local Businesses (Formerly the Special Free Trade Zone) 26
- New Industrial Sites in Okinawa Prefecture 29
- Comments From Companies That Have Expanded Into Okinawa Prefecture 33
- Aviation-Related Business Cluster in Okinawa 35
- Building a Startup Ecosystem 37
- Okinawa's Energy Policy for Achieving a Carbon-Free Society by FY2050 38
- The Bioindustry 39
- The Research Institutes 40

Overview of the Environment in Okinawa Prefecture

Overview of the Business Environment in Okinawa Prefecture ~Okinawa – Crossroads of Asia Connecting People and Goods~

Okinawa Attracting Companies as a Business Hub

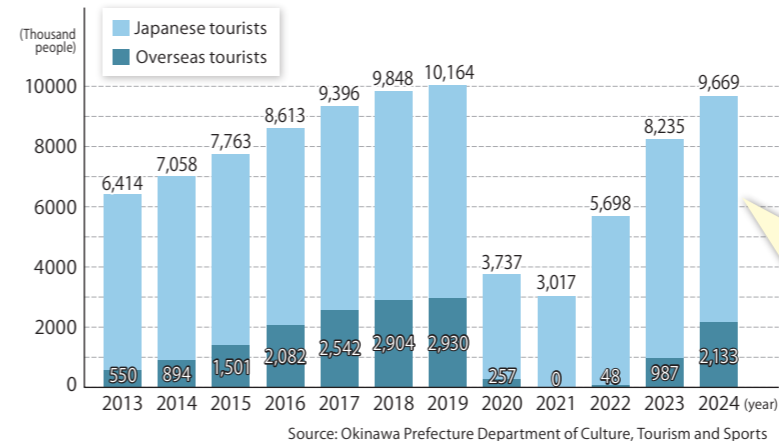
Trends in the number of companies located in the Former Special Economic Zone (Manufacturing industry)



Source: Business Creation Promotion Division; Department of Commerce, Labor, and Industry; Okinawa Prefectural Government (As of March 2026)



Progression of number of visitors to the region



<As of January 2026>

- Domestic flights provide service to and from 23 cities.
- International flights provide service to and from major cities in Taiwan, South Korea, Bangkok, Hong Kong, Singapore, and Malaysia.

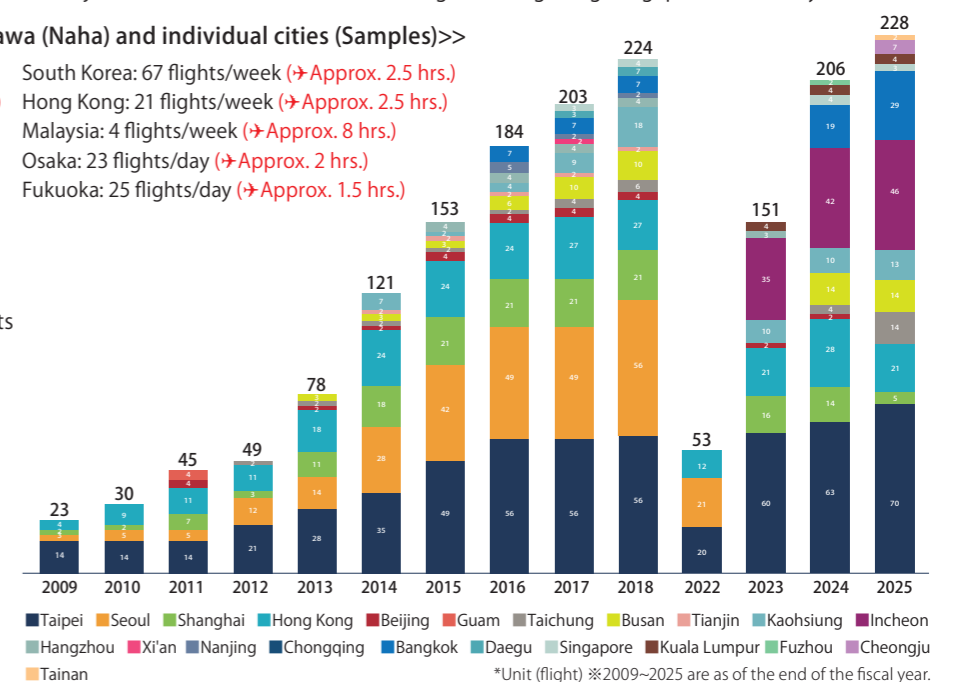
<<Flights and travel time between Okinawa (Naha) and individual cities (Samples)>>

- Taiwan: 99 flights/week (→Approx. 1.5 hrs.)
- Bangkok: 29 flights/week (→Approx. 4.5 hrs.)
- Singapore: 3 flights/week (→Approx. 6 hrs.)
- Tokyo: 42 flights/day (→Approx. 2.5 hrs.)
- Nagoya: 13 flights/day (→Approx. 2 hrs.)
- South Korea: 67 flights/week (→Approx. 2.5 hrs.)
- Hong Kong: 21 flights/week (→Approx. 2.5 hrs.)
- Malaysia: 4 flights/week (→Approx. 8 hrs.)
- Osaka: 23 flights/day (→Approx. 2 hrs.)
- Fukuoka: 25 flights/day (→Approx. 1.5 hrs.)

Number of scheduled international passenger flights in service

The number of international passenger flights at Naha Airport has increased by approximately a factor of 10 in 2025 compared to 2009.

Source: Okinawa Convention Bureau research
*All services were suspended from 2019 to 2021 due to COVID-19



A V-shaped recovery in visitor numbers

The total number of visitors to Okinawa in 2024 was 9,668,800, an increase of 1,433,400 (17.4%) over the previous year. In terms of annual visitor arrivals, domestic visitors exceeded pre-COVID-19 levels to reach a record high. International visitor numbers recovered to 72.8% of pre-COVID-19 levels.

《2024 Results》

- Number of visitors 9,668,800 people to the region (of which overseas visitors ... 2,132,800 people)
- Tourism revenue 946.3 billion yen

Living Environment in Okinawa Prefecture

~A fulfilling environment to live in "Okinawa"~

An overview of Okinawa Prefecture

Location	Southwestern tip of the Japanese archipelago	Distance north to south of Okinawa main land	Approx. 100km
Marine area	Approx. 1,000km East to West, Approx. 400km North to South	Highest temperature	34.2 °C in October
Number of islands	160 islands of various sizes (48 inhabited islands) <small>* 0.01 km² or larger</small>	Lowest temperature	10.2 °C in February
Total land area of Okinawa Prefecture	2,282.15km ²	Climate	Subtropical climate and warm throughout the year compared to other prefectures

(Source: Japan Meteorological Agency; Okinawa Prefecture)

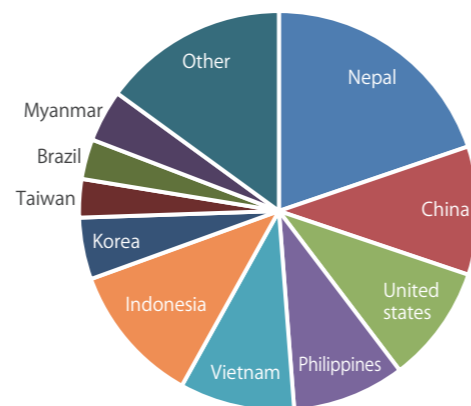
Life in Okinawa

Since Okinawa has historically close relationships with overseas countries, many people from abroad already have the experience of living in Okinawa, which has promoted the development of an environment and communities that are friendly to people from abroad.

Okinawa Industry Promotion Public Corporation

The *Business & Life in Okinawa* provides a wide range of information, including information on the living environment in Okinawa Prefecture that overseas companies need to make their move trouble free.

Source: Statics on Foreign Nationals Residing in Japan by the Immigration Services Agency
Number of Foreign Nationals Residing in Japan by Prefecture, Nationality, and Region as of June 2025



RANKING

Okinawa: Japan's youngest and most vibrant prefecture

Average age	1st in Japan (43.5)	👑
Total fertility rate	1st in Japan (1.7)	👑
Youth population	1st in Japan (16.1%)	👑
Rate of natural change in population	1st in Japan (-2.3%)	👑
Percentage of residents returning to home prefecture	1st in Japan (69%)	👑
Startup rate	1st in Japan (5.4%)	👑
Population growth over the past five years	2nd in Japan (2.4%)	👑
Total population	#25th in the nation (1,467,394 people)	

Source: The Statistics Bureau of Japan and the Ministry of Health, Labour and Welfare



Okinawa as seen from 100 metrics (Japanese language only)

Safety and Disaster Prevention in Okinawa

Japan is known as a country that is peaceful and orderly. According to the 2025 Global Peace Index, Japan is the 12th most peaceful country in the world.

Useful Websites in the Event of Disaster

Most local governments in Okinawa have prepared local community disaster prevention guide maps and evacuation center maps in multiple languages for foreign residents in the event that a typhoon, earthquake, or some other disaster occurs. The Okinawa Disaster Prevention Information Portal also provides information about typhoons, earthquakes, tsunami, advisories, and warnings in English, Chinese (Simplified and Traditional), and Korean.

<https://bousai-okinawa.my.salesforce-sites.com>

In the Event of Emergency

Fire, injury, or sudden illness TEL 119
Dial 119 direct to call for a fire truck or ambulance.

Accidents and crimes TEL 110
Dial 110 direct to call the police.



Medical Care in Okinawa

The prefecture operates six hospitals covering the northern, central, and southern (including Naha) parts of the main island as well as the Miyako and Yaeyama islands, respectively, as well as another 16 clinics associated with those hospitals. Also, there are emergency hospitals in every part of the prefecture with staff who can handle foreign languages as well, so the non-Japanese speaker need not be concerned if worst comes to worst.

Emergency Hospitals with Foreign Language-Speaking Staff

EN English CN Chinese KR Korean

Northern Okinawa Medical Center

EN

1712-3 Umusa, Nago City
TEL: +81-980-54-1111

Okinawa Kyodo Hospital

EN

4-10-55 Kohagura, Naha City
TEL: +81-98-853-1200

Urasoe General Hospital

EN CN KR

1-56-1 Maeda, Urasoe City
TEL: +81-98-878-0231

Nakagami Hospital

EN

610 Noborikawa, Okinawa City
TEL: +81-98-939-1300

Makiminato Chuo Hospital

EN CN

1199 Makiminato, Urasoe City
TEL: +81-98-877-0575

Nanbu Tokushukai Hospital

EN CN

171-1 Hokama, Yaese Town
TEL: +81-98-998-3221

University of the Ryukyus Hospital

EN CN KR

1076 Kiyuna, Ginowan City
TEL: +81-98-894-1301

Nanbu Medical Center & Children's Medical Center

EN CN KR

118-1 Arakawa, Haebaru Town
TEL: +81-98-888-0123

Chubu Tokushukai Hospital

EN CN KR

801 Higa, Kitanakagusuku Village
TEL: +81-98-932-1110

Naha City Hospital

EN CN KR

2-31-1 Furujima, Naha City
TEL: +81-98-884-5111

Source: Japan Tourism Agency and Okinawa Prefecture, Department of Public Health, Medical and Long-Term Care, Medical Policies Division

A Useful Website Should You Fall Sick

Should it become necessary to get medical treatment in Japan, this website should be useful. It provides easy-to-understand information in English, Chinese, and Other languages about where you should go if you have various symptoms.

Japan Tourism Agency, "Guide to Medical Institutions"
https://www.jnto.go.jp/emergency/eng/mi_guide.html



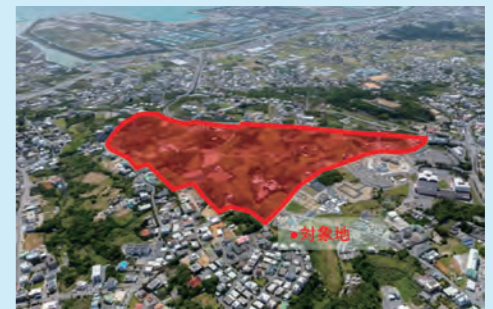
Map of Okinawa

~Okinawa: Where businesses and resorts thrive alongside each other~

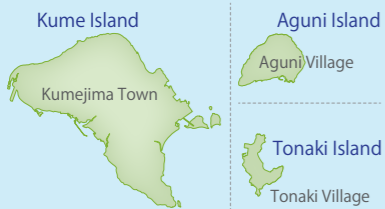
Okinawa offers one of the world's premier resort environments, a place to refresh the body and uplift the spirit. With an environment where the work-life balance is ideal, Okinawa attracts many business professionals as a prime place for workation—a combination of work and the enjoyment of a vacation.



National Institute of Technology, Okinawa College P.40~



Uezu & Nakamine Districts, Uruma City P.29~



Okinawa Institute of Science and Technology Graduate University (OIST) P.40~



Naha Port International Container Terminal P.12~



International Logistics Hub Integrated Industrial Area, Naha District



Maezato District, Itoman City P.30~



Okinawa Expressway
Naha Airport Expressway



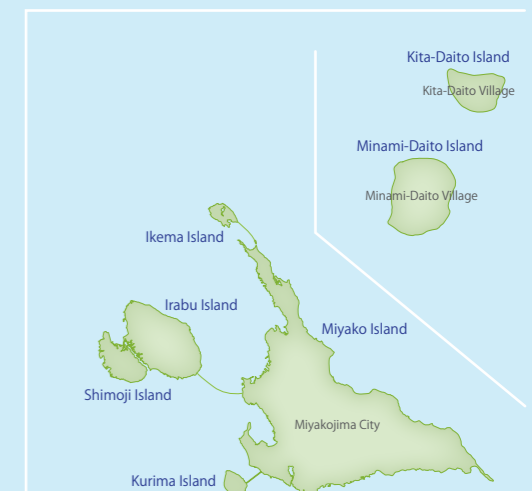
Okinawa IT Shinryo Park



International Logistics Hub Integrated Industrial Area, Uruma/Okinawa District (Around 27km/45-minute drive from Naha Airport) P.25~



Tomoyose-Higashi District, Yaese Town P.31~



Umikaji Terrace Senagajima