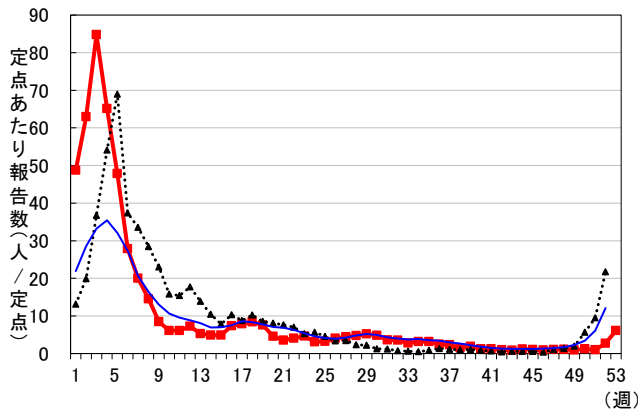


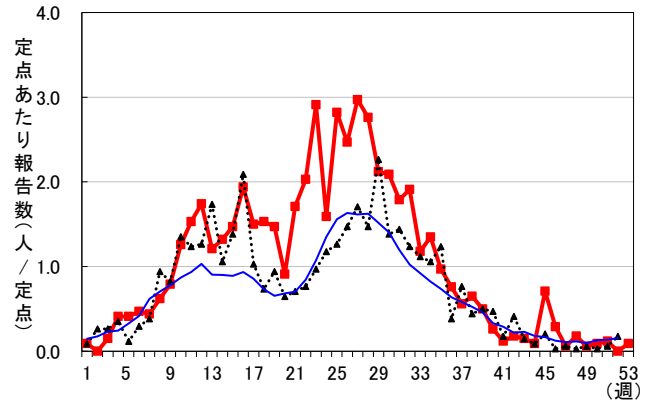
週別報告数（県内） 2015年第53週現在

■ 2015年    ▲ 2014年    — 過去5年間の平均\*  
 \*過去5年間の平均：前週、当該週、後週の合計15週の平均

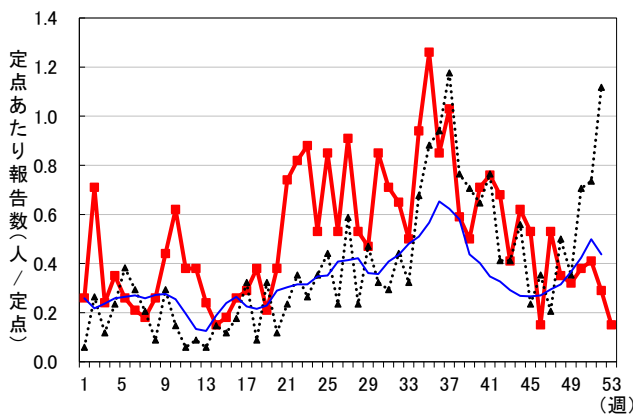
インフルエンザ



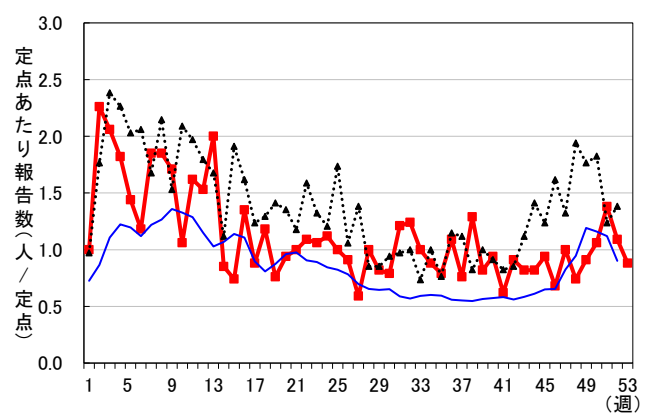
RSウイルス感染症



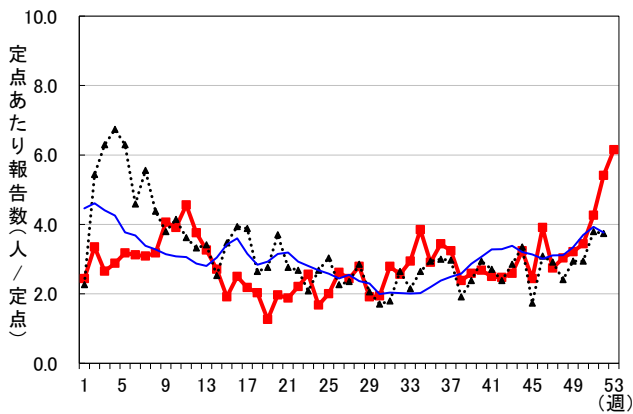
咽頭結膜熱



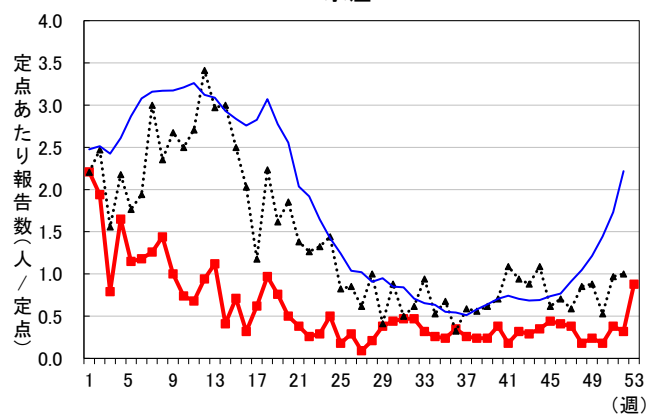
A群溶血性レンサ球菌感染症



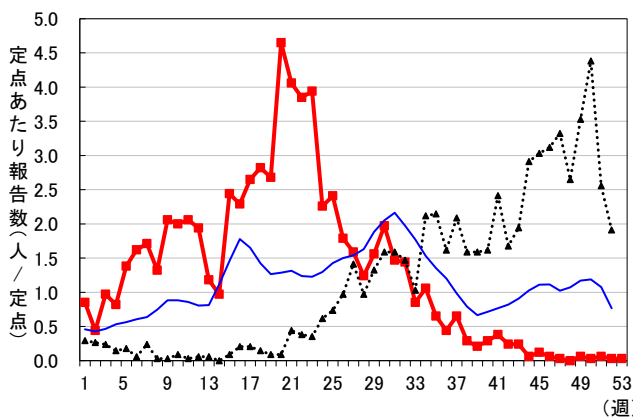
感染性胃腸炎



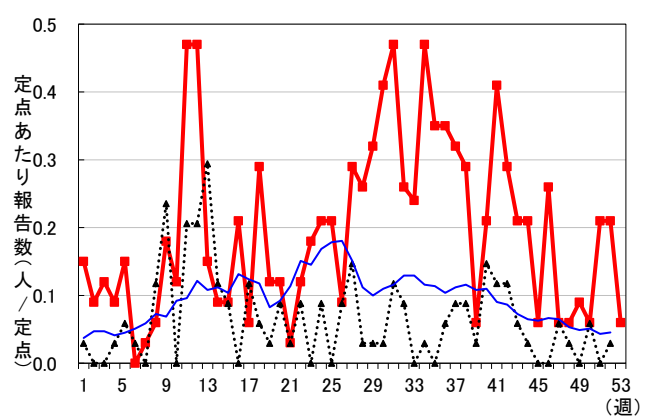
水痘



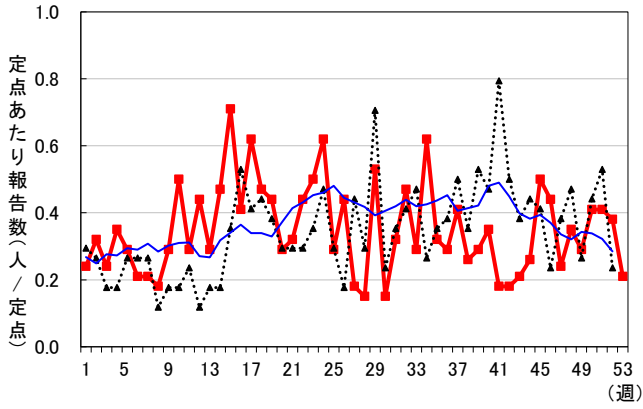
手足口病



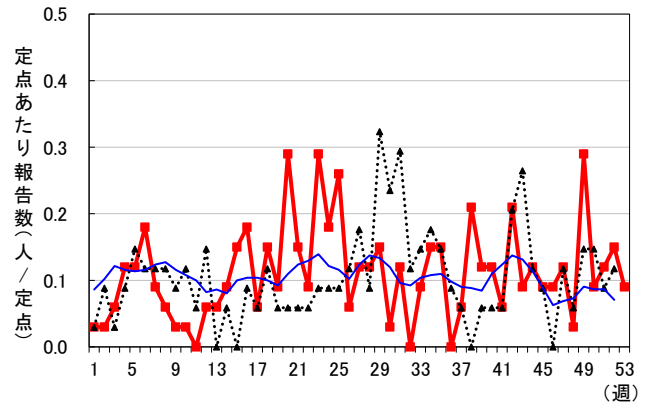
伝染性紅斑



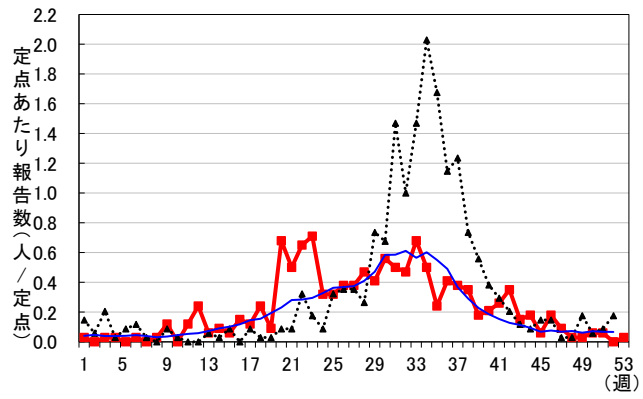
突発性発疹



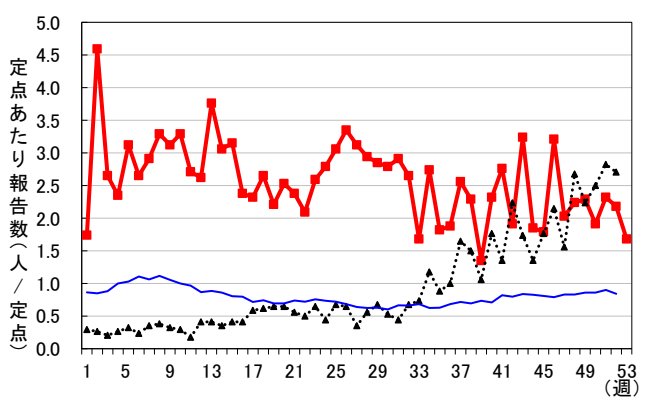
百日咳



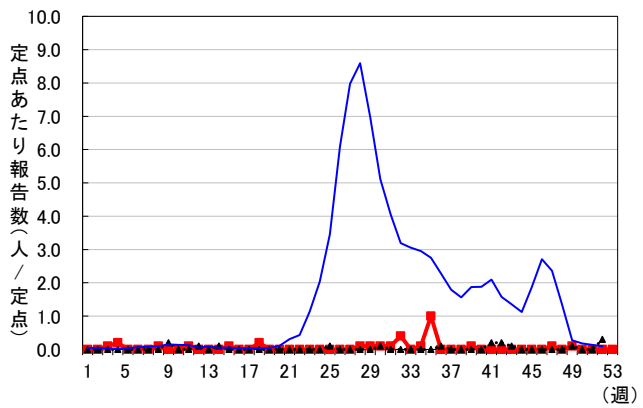
ヘルパンギーナ



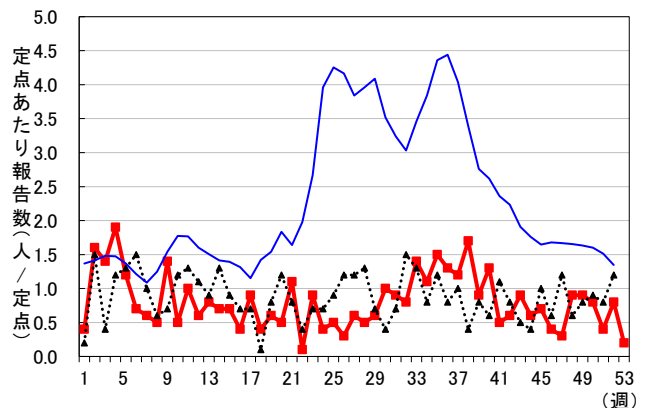
流行性耳下腺炎



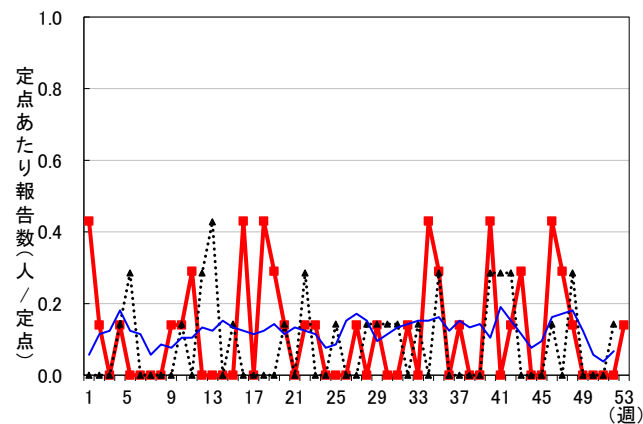
急性出血性結膜炎



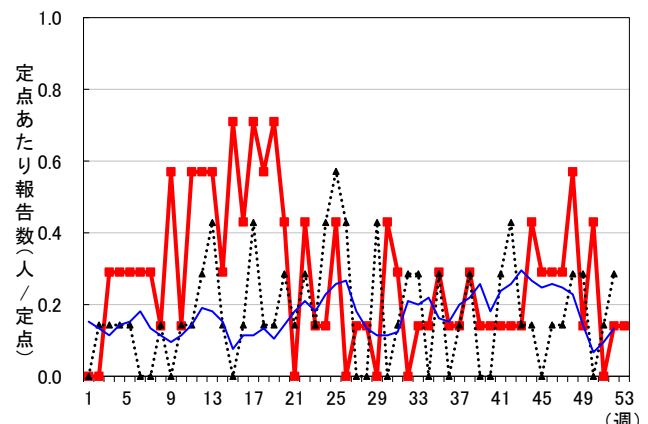
流行性角結膜炎



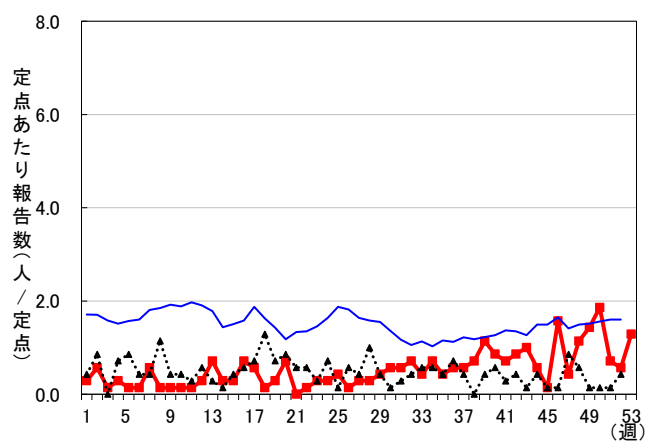
細菌性髄膜炎



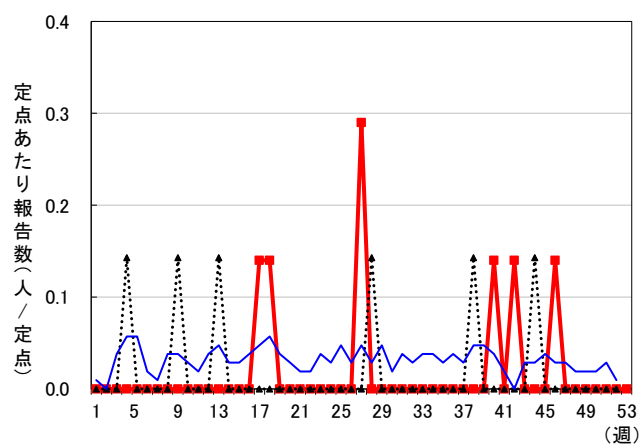
無菌性髄膜炎



マイコプラズマ肺炎



クラミジア肺炎



感染性胃腸炎(ロタウイルス)

