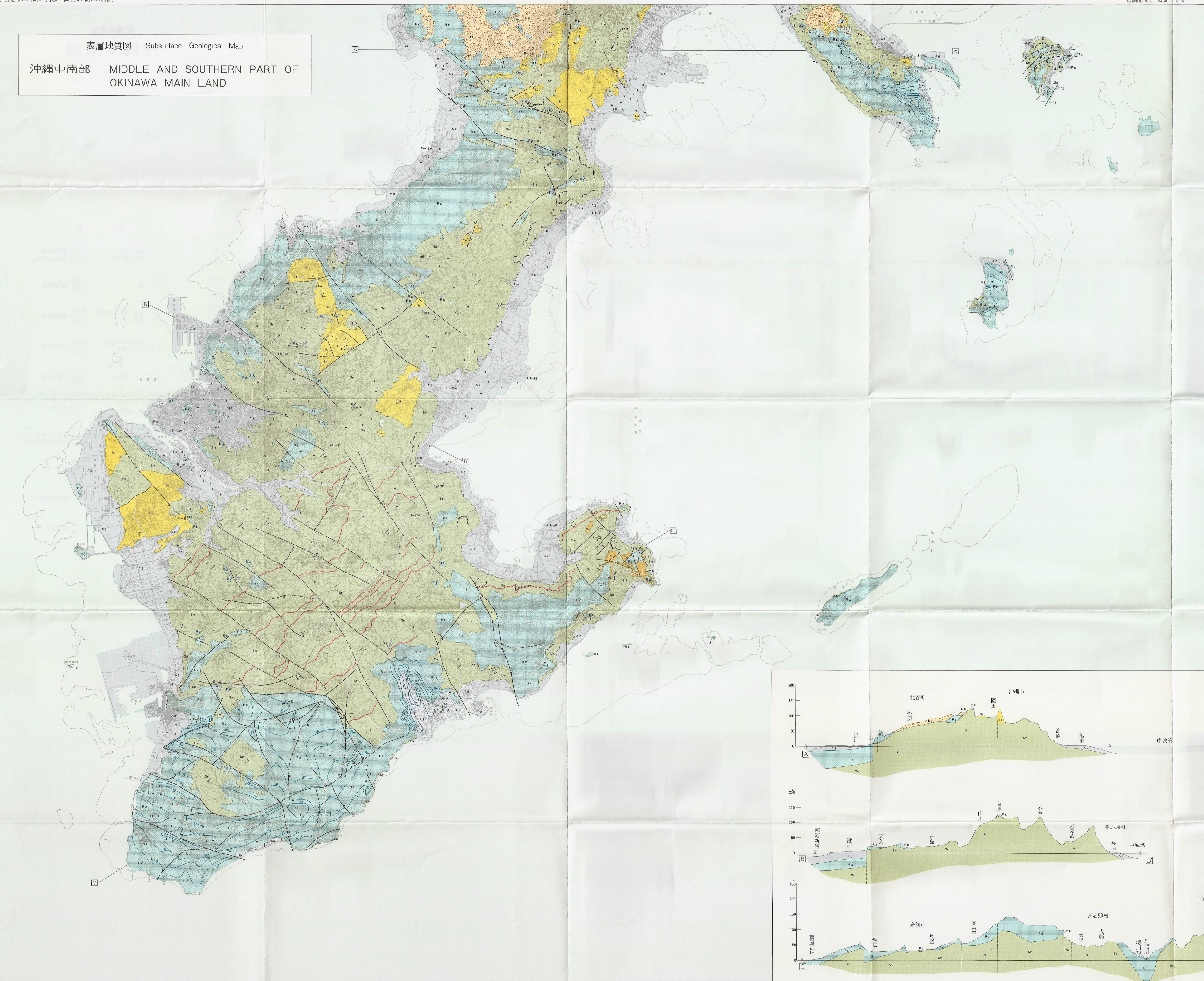
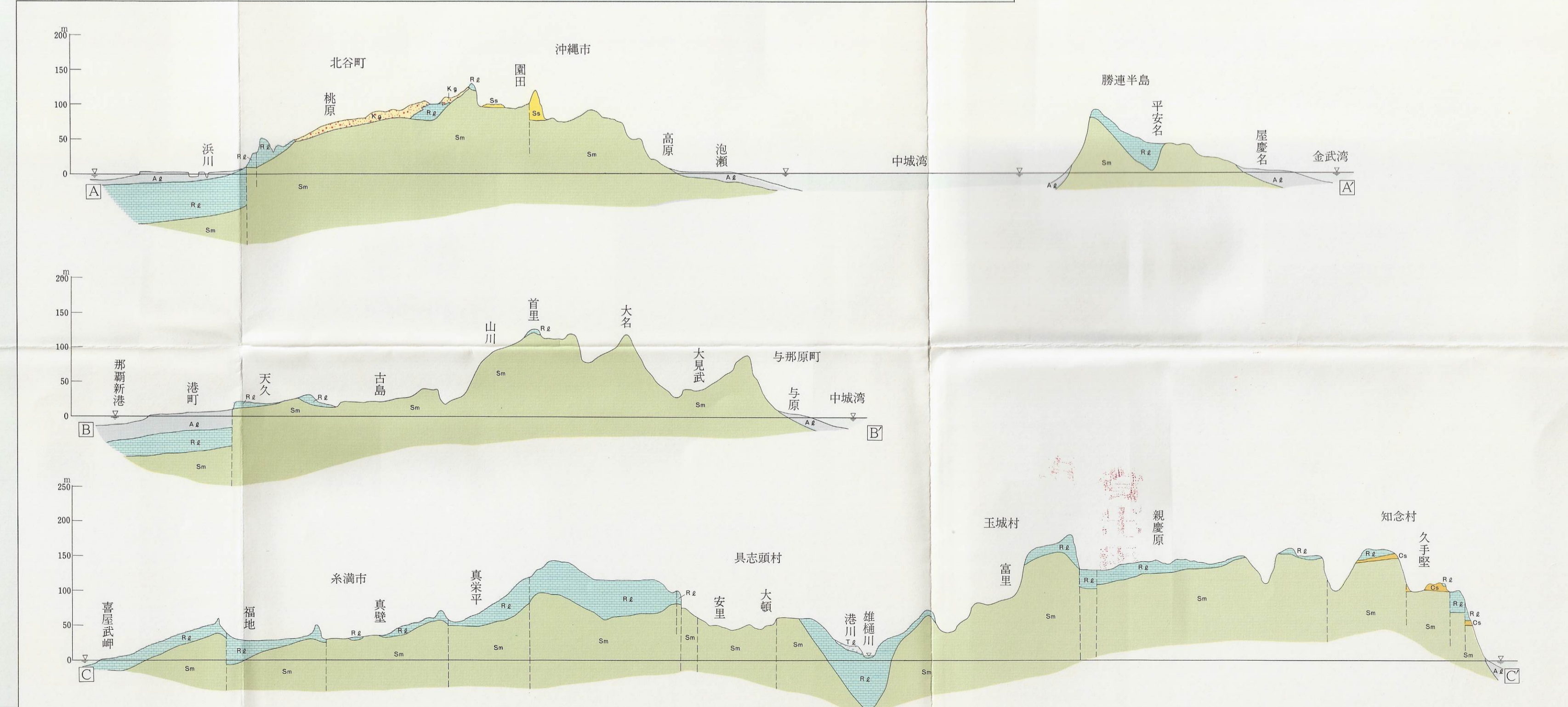
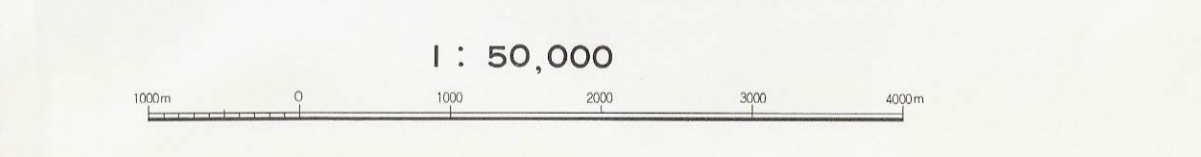


昭和五十六年調査

表層地質図 Subsurface Geological Map
 沖縄中南部 MIDDLE AND SOUTHERN PART OF OKINAWA MAIN LAND



- 凡例 (LEGEND)
- A-E 沖積層(未固結堆積物)粘土・シルト・砂・礫
Alluvial bed (Unconsolidated sediments) Clay, Silt, Sand, Gravel
 - Ds 砂丘砂層(未固結堆積物)石灰質砂
Dune sand bed (Unconsolidated sediments) Calcareous sand
 - Tt 段丘石灰岩(固結堆積物)砂質石灰岩“栗石”
Terrace limestone (Consolidated sediments)
 - Ls 琉球石灰岩(固結堆積物)砂質石灰岩
Limestone "Awa-ishi" (Consolidated calcarenite)
 - Rz 琉球石灰岩(固結堆積物)一部未固結-半固結
Ryukyu Limestone (Consolidated, partly Unconsolidated, Unconsolidated-Semi-consolidated)
 - Ks 国頭礫層(未固結堆積物)粘土・砂・砂礫
Kunigami Gravel bed (Unconsolidated sediments) Clay, Sand, Sand and Gravel
 - Cs 知念砂岩(固結堆積物・半固結堆積物)
Chinen Sand (Consolidated, Semi-consolidated sediments)
 - Mn 泥岩(固結堆積物)
Mudstone (Consolidated sediments)
 - Tr 凝灰岩
Tuffaceous rocks
 - Ss 砂岩(固結堆積物・半固結堆積物)
Sand stone (Consolidated, Semi-consolidated sediments)
- 新第三紀 第四紀
- 地層の走向・傾斜
Strike and Dip
 - 断層
Fault
 - 地すべり地
Landslide
 - 琉球石灰岩基底面等高線(m)
Contour at base of Ryukyu Limestone, datum sea level, in meters
 - 地質ボーリング地点
Bore hole point
 - 地質柱状図地点とその番号
Point's of Geological profile, it's number



昭和五十八年三月発行
 沖縄県